

The background of the image is a vibrant, multi-colored opal with shades of blue, green, and yellow. A large white circle is centered on the image, containing the logo. The logo consists of the word "Opal" in a black, lowercase, sans-serif font. The letter "O" is a thick black outline that encloses a circular inset image of a colorful opal. Below "Opal" is the word "BY DANUBE" in a red, uppercase, sans-serif font, with "BY" in a smaller size.

Opal
BY DANUBE

OpalZ
BY **DANUBE**

LUXURY
for Life





DANUBE

DANUBE

DANUBE
PROPERTIES

OpalZ
DANUBE

DANUBE
PROPERTIES





Expansive
Lobby

OPALZ
by
DANUBE



A modern living room featuring a dining table with a glass top and light blue chairs. A large, gold-framed mirror is mounted on the wall, reflecting the room's interior. The room is decorated with a tufted sofa, a floor lamp, and a console table with a decorative wall sculpture. The floor is made of white marble.

Spacious
Living Room





Luxurious
Bedroom

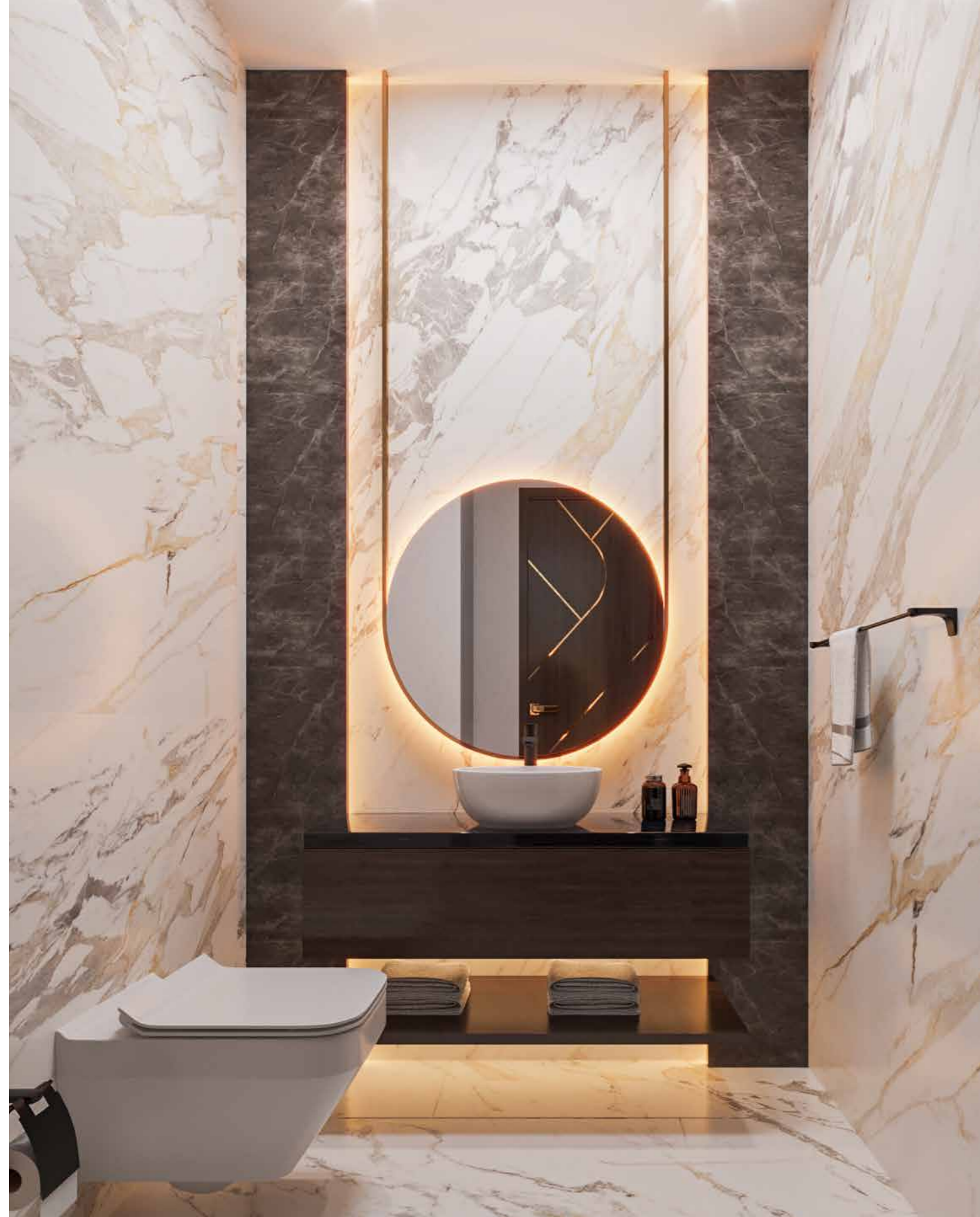


Modular
Kitchen



Modern
Bathroom





**Live in the
New Realm of**

Luxury



Wake up everyday to experience moments that take your breath away. Contemporary interiors, modern amenities and a promising location. Presenting **Opalz by Danube** - a brand new project that redefines luxury for life



DOCTOR
ON CALL



SKY LOUNGE AT
CROWN OF TOWER



PRIVATE POOL
IN BALCONY



CAR CHARGING
POINT



OPEN AIR
CINEMA



JOGGING
TRACK



ENTRANCE
LOBBY



NANNY ON
BOARD



KIDS
PLAY AREA



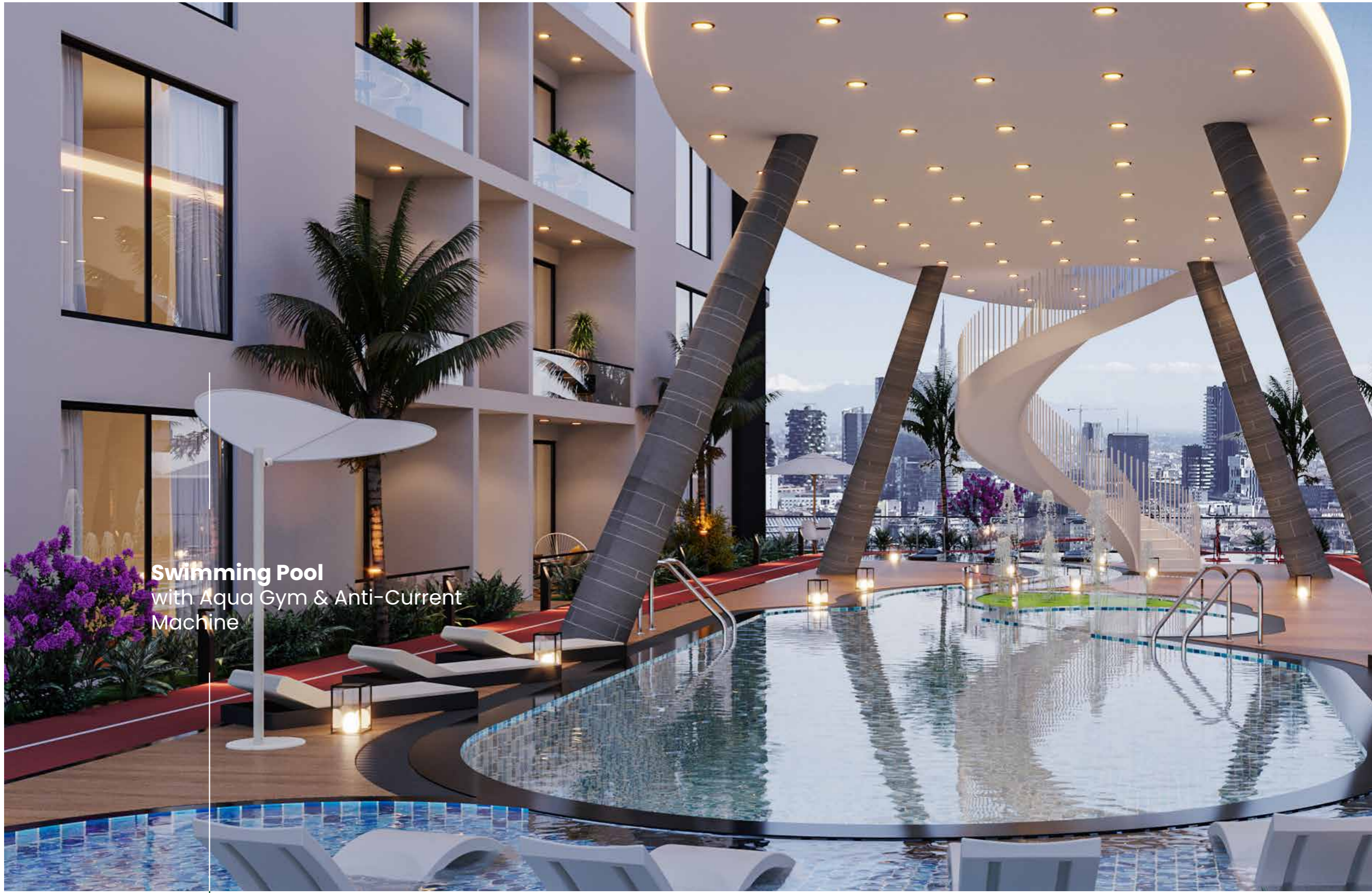
SHALLOW
POOL



KIDS
POOL



SHUTTLE BUS
TO METRO STATION



Swimming Pool
with Aqua Gym & Anti-Current
Machine





A modern rooftop lounge area, likely a sky deck, featuring contemporary furniture, a large tree, and decorative lighting. The space is enclosed by a wall with a light-colored, textured brick pattern. The ceiling is a large, white, curved structure with a series of small, blue, teardrop-shaped lights hanging from it. The floor is a mix of light-colored concrete and dark wood decking. Several people are seated on dark brown and light-colored sofas, engaged in conversation. A man in a white jacket is sitting on a white wire chair. A woman in a black dress is sitting on a sofa in the foreground. A man in a suit is standing near a sofa. A large, white, curved umbrella is positioned over a seating area. A tall, thin tree with green leaves is illuminated from below. The overall atmosphere is sophisticated and modern.

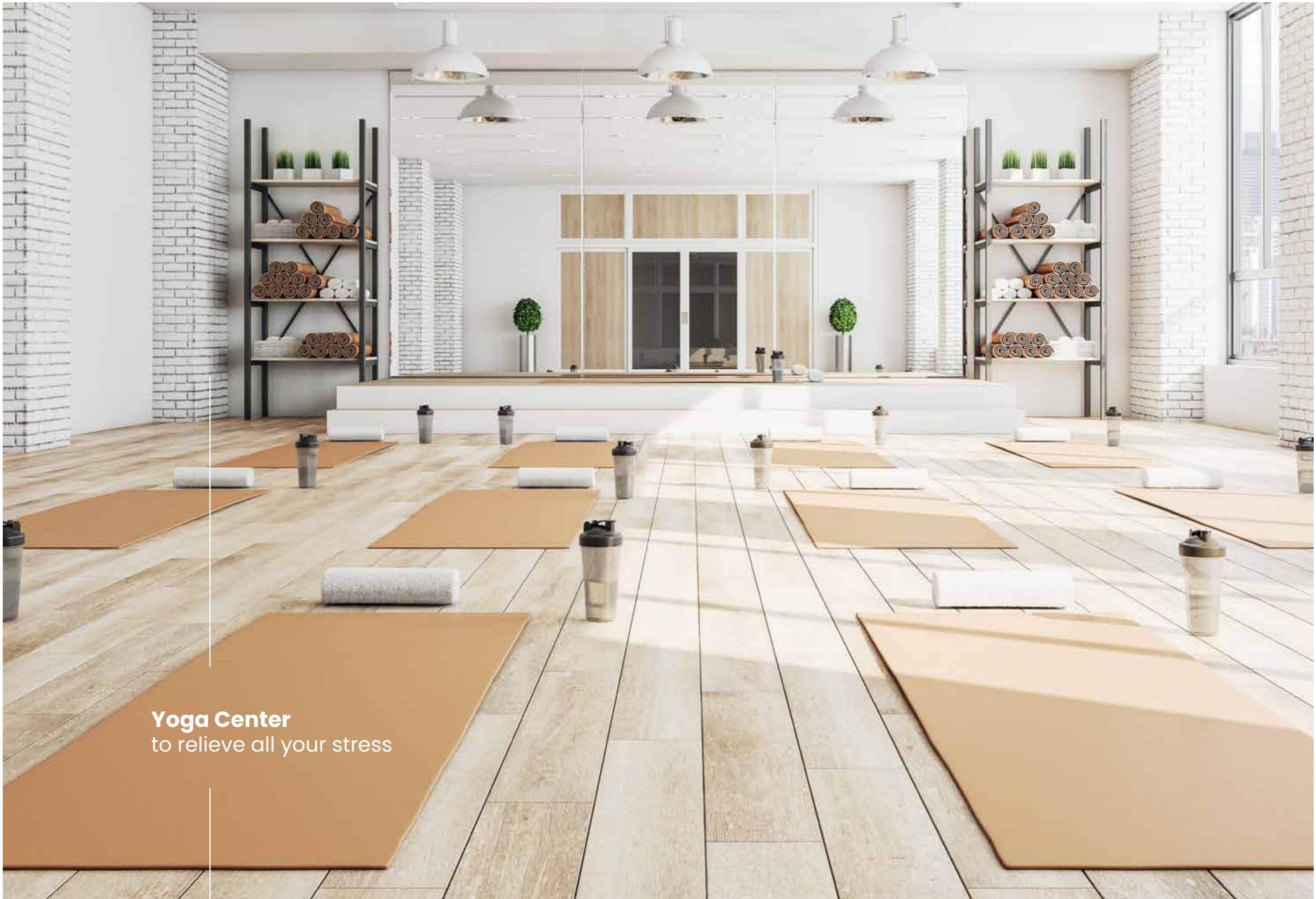
Panoramic
Sky Deck



Modern Beauty Salon
with a well trained staff



Smart Business Center



Yoga Center
to relieve all your stress



Outdoor Cinema
for a fun community gathering

Kids Day Care
with nanny on board*

*Subject to authority approval

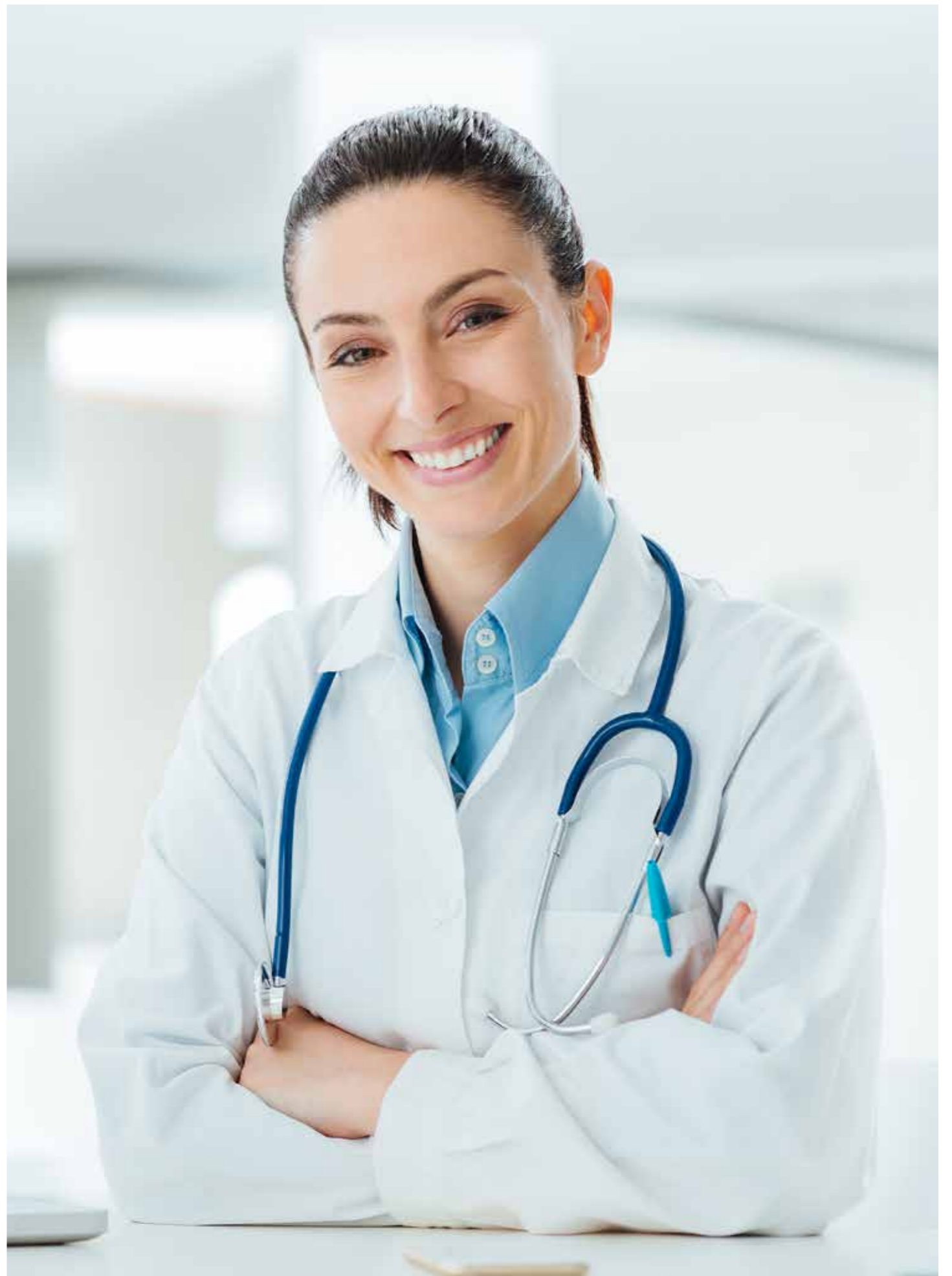




Doctor on Call
24x7*

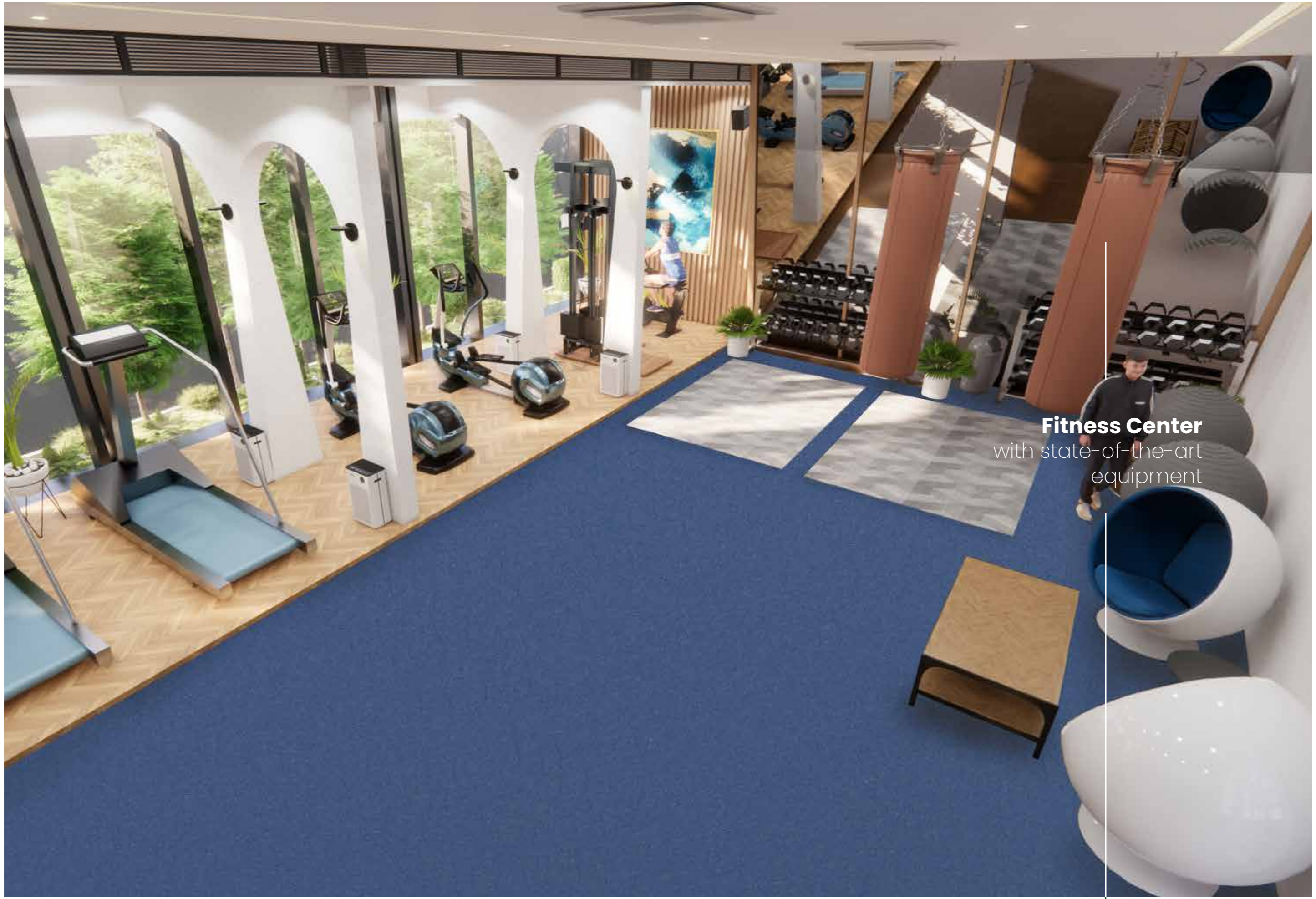
*Subject to authority approvals





Premium Paddle Tennis Court
with matching professional standards

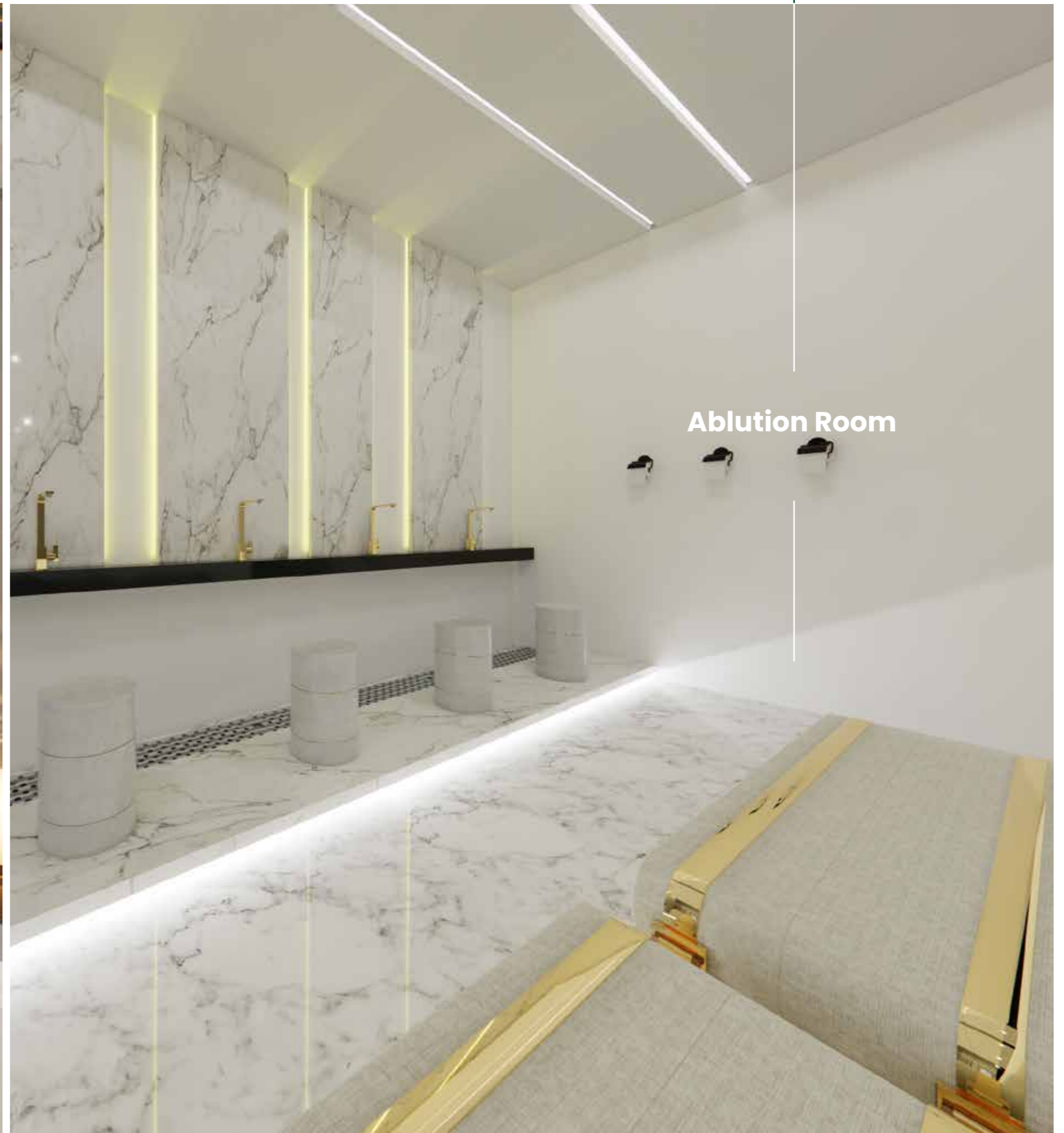




Fitness Center
with state-of-the-art
equipment



Prayer Room



Ablution Room



Multipurpose Hall





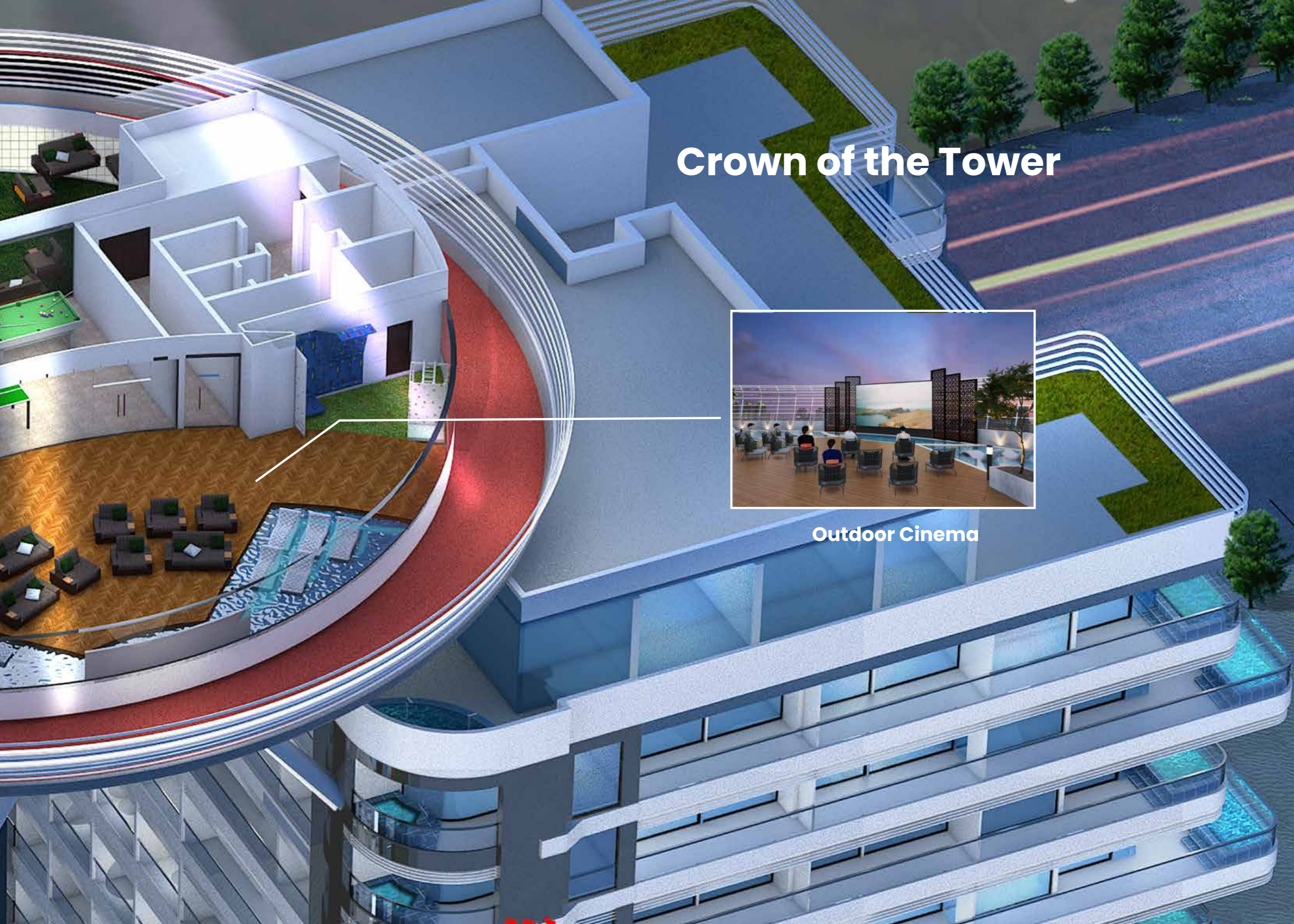
Multipurpose Hall



Jogging Track



Crown of the Tower



Outdoor Cinema



DUBAI

An Investor's Paradise

- WORLD CLASS AMENITIES
- HIGH CAPITAL APPRECIATION
- HIGH RENTAL INCOME (upto 8%*)
- PROGRESSIVE ECONOMY
- 100% TAX-FREE PERSONAL INCOME
- EASE OF INVESTMENT
- HAPPY AND SAFE CITY
- WORLDWIDE CONNECTIVITY
- UAE LONG TERM VISA & GOLDEN VISA

*subject to market fluctuation

DANUBE PROPERTIES

Why Choose us



Freehold
Ownership



High Capital
Appreciation



High
ROI

29

Years of
Trust



Prime
Location



Affordable
Price



Best Payment
Plan



Registered Under
Dubai Land
Development



Semi
Furnished



Luxury
Finishing



World-Class
Amenities



Timely
Delivery

WE LAUNCH WE DELIVER

We firmly believe that Danube's success as a developer is derived from our project delivery and quality construction. Hence, as a responsible property developer, we are always committed to delivering our promises.

Backed by our strong finance in building materials, all the sites of our existing projects are moving closer to completion and progressing every day. Our goal is to deliver what we promised and see that smile on your face while you hold the keys to your dream home.

We want to walk hand in hand with you and hence we provide live updates of the projects underway. All you have to do is, visit our website or scan the QR codes on the adjacent page and real updates delivered to you right away!

DANUBE
No.1 building material company

DANUBE
PROPERTIES

DANUBE
HOME

ALUCOPANEL
USA

Milano
ITALY

M
CasaMilano

GLOBAL GAME CHANGERS • THE YOUTH PILL

MAY 2016 ISSUE 47

Forbes

Middle East

TOP INDIAN
BUSINESS
LEADERS
IN THE ARAB WORLD



RIZWAN SAJAN

HE SURVIVED TRAGEDIES
AND CAME OUT
STRONGER

FROM MUMBAI TO DUBAI

LUXURY REAL ESTATE MAY BE TAKING A HIT IN DUBAI,
BUT HIS LOWER-PRICED APARTMENTS ARE SELLING OUT
AND MORE PROJECTS ARE UNDERWAY.

OTHERS

QATAR
\$5 OMAN

QAR 30
OMR 3 BAHRAIN
KUWAIT

BHD 3
KWD 2.5 UAE
SAUDI ARABIA

AED 30
SAR 50

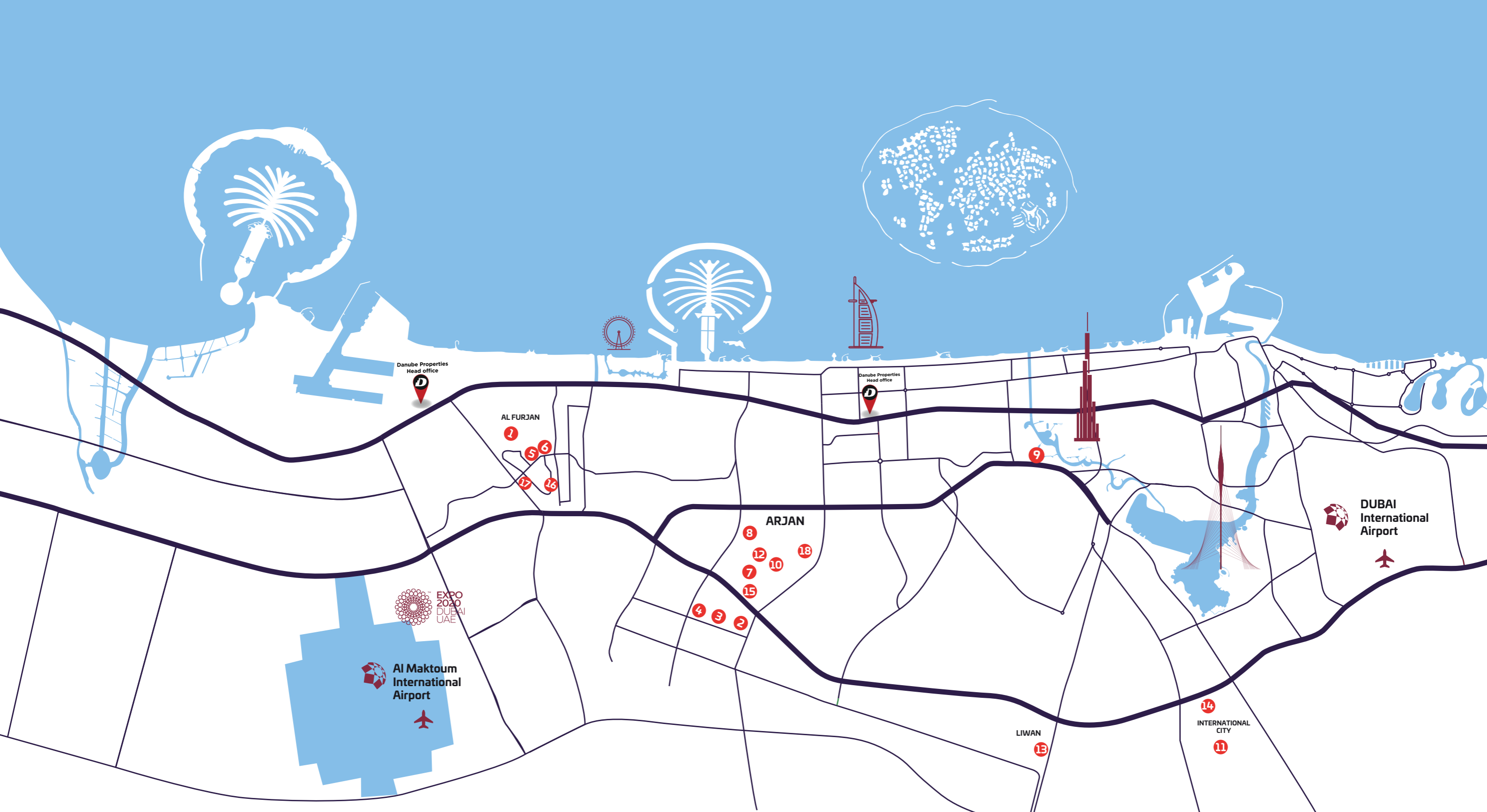




Projects by Danube



■ COMPLETED ■ UNDER CONSTRUCTION



1 DREAMZ

4 Glitz3

7 MIRACLZ

10 Jewelz

13 WAVEZ
RESIDENCE

16 Pearlz

2 Glitz 1

5 STARZ

8 RESORTZ
RESIDENCE

11 LAWNZ

14 OLIVZ

17 GEMZ

3 Glitz 2

6 GLAMZ

9 BAYZ

12 ELZ
RESIDENCE

15 SKYZ

18 Opalz

Prime Location & A Vibrant Community

Life in Dubai Science Park is a perfect amalgamation of technology, art and sustainable development. The robust infrastructure and collaborative environment at the location has become Dubai's most popular destination for investors and residents.

With close proximity to Sheikh Zayed Road and Mall of Emirates Metro Station, the project is a just a few minutes away by car from most of Dubai's hotspots.

The community offers a luxurious environment with a futuristic approach that attracts the residents and citizens who are ready to experience a finest lifestyle.

OPPOSITE

To Dubai Hills Mall

3 MINUTES

To Mohamed Bin Zayed Road

8 MINUTES

To Sheikh Zayed Road

7 MINUTES

To Mall of the Emirates

15 MINUTES

To Burj Khalifa/Dubai Mall



DANUBE

DANUBE

DANUBE
PROPERTIES

OpalZ
DANUBE
DANUBE
PROPERTIES

TOTALLY HOME

REAL ESTATE LLC



97145548620



971564951052



sales@totallyhomerealestate.com



<https://totallyhomerealestate.com>