

ELLINGTON

EBH

BEACH HOUSE

THE STORY OF AN ICON ON
THE PALM'S EASTERN CRESCENT

AN OCEAN

OF CHANGE



ELLINGTON

EBH

BEACH HOUSE

A design legacy is unfolding across Dubai. Bringing with it a new era that calls for us to re-examine the human experience of living and elevate the modern expression of home.

Our vision is to transcend what's expected of a property developer in the UAE by going beyond the surface-level aesthetic and into design formed from deep-rooted human understanding. It's a philosophy we have been cultivating since 2014 in a portfolio of thriving communities that bring new perspectives to the city's most prestigious locations.

Embracing Dubai's insatiable appetite for aspiration and expansion, our latest collection of multi-family apartments ventures to the furthest reaches of a curated island paradise; the East Crescent of Palm Jumeirah.

ROBERT BOOTH

Robert D. Booth
Co-Founder & Managing Director


ELLINGTON
PROPERTIES

CONTENTS

04

FOREWARD

An ocean of change

08

CONCEPT

A new breed of icon

10

LOCATION

A curated island paradise

16

INTRODUCTION

Immersed in a new way of living

19

INTERIORS AND EXTERIOR

Essence of home

23

PANORAMIC VIEWS

Paradise redefined

26

PRIVATE SHORELINE

Ellington Beach

30

ARRIVAL

The ocean's doorstep

33

CLUBHOUSE

Style and sophistication

39

WELLNESS

Your sanctuary of self care

44

POOLSIDE

A drop of peace in the ocean

47

GARDENS

Modernity and belonging

51

APARTMENTS

A life in tune with the ocean

72

AMENITIES

Relax and re-energise

75

SUSTAINABILITY

For design to excel, it must be sustainable

78

ART

Ellington Art Foundation

79

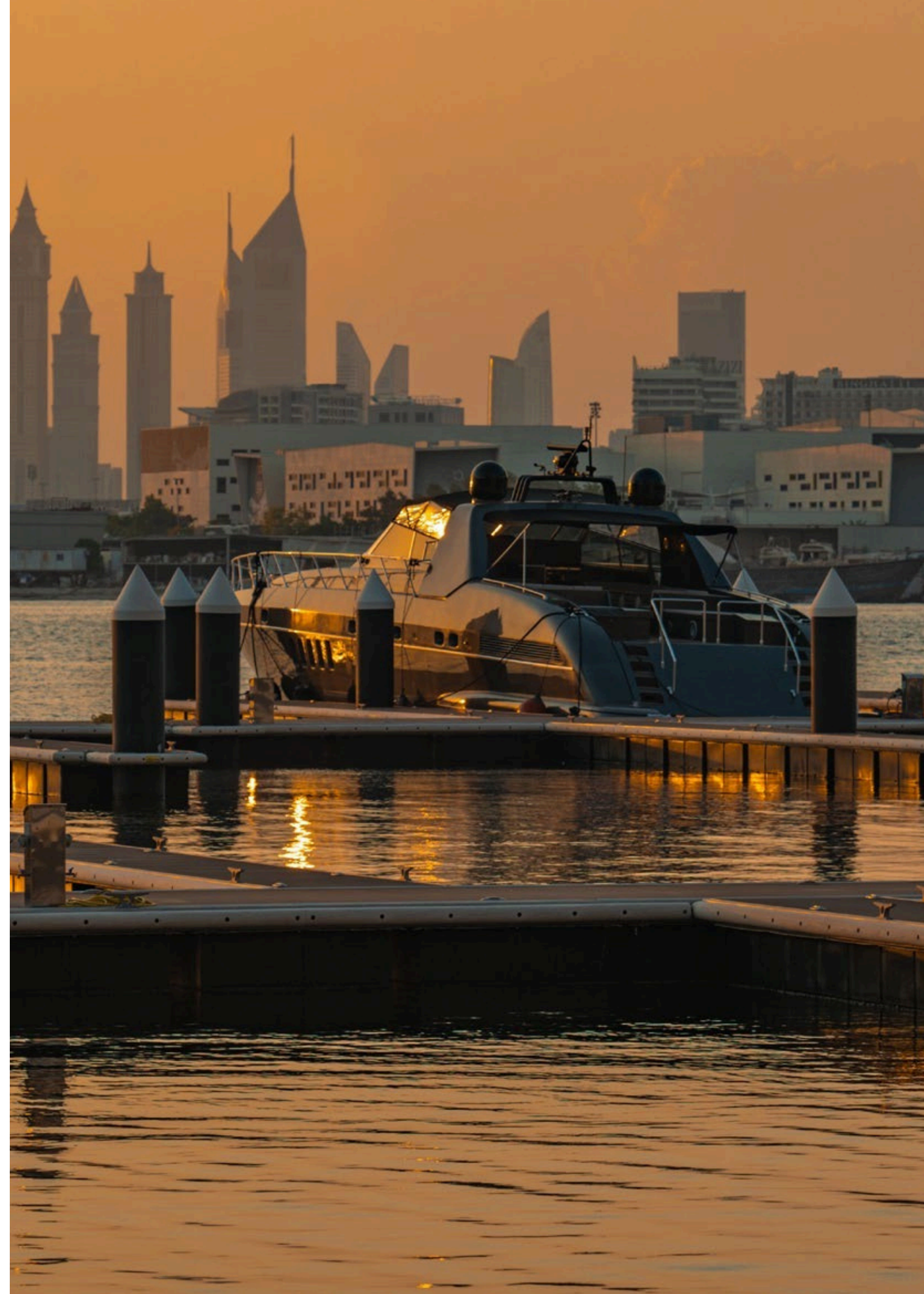
AWARDS

Recognition for our devotion to design

80

CONTACT

Make an enquiry





ELLINGTON BEACH HOUSE

INHERENTLY EXCLUSIVE
YET EASY TO BELONG

A NEW BREED OF *ICON*

Ellington Beach House is a new lifestyle icon perched on the tranquil east crescent of Palm Jumeirah. Capturing the essence and elegance of a sophisticated private members club, it is positioned to follow the solar pathway overhead — watching the sun rise over the Gulf and set over Dubai's skyline from its panoramic views.

Every detail flows in complete synergy with your life. Its superyacht-inspired architecture opens out to sea while, at the same time, inviting you inside to discover a world of elevated charm and a depth of character unlike anywhere else.

FRAMING THE GULF

Palm Jumeirah embodies a modern era of leisure and innovation. Yet through its relationship with the sea, it is forever linked to Dubai's maritime heritage by 17 fronds and a crescent-shaped outer beach reconnecting the city with the restorative effects of the ocean. Far more than an island, The Palm is a true marvel of engineering symbolic of the region's yearning for individualism and modernisation.

Boutique hotels, fine dining, malls and architectural landmarks are connected with a network of roads leading back into the heart of the city. However, it's when you approach from the water that Palm Jumeirah's full magnificence—framed by the Dubai skyline—is best poised to capture hearts and imaginations.

LIVE MOMENTS
FROM THE HEART
OF DUBAI

01
MINUTE
The Boardwalk Palm Jumeirah

02
MINUTES
Atlantis The Palm

05
MINUTES
The Pointe Palm Jumeirah

10
MINUTES
The View at The Palm

10
MINUTES
Nakheel Mall

12
MINUTES
Dubai Media City

15
MINUTES
Dubai Marina

15
MINUTES
Dubai Harbour

20
MINUTES
Emirates Golf Club

20
MINUTES
Burj Al Arab

25
MINUTES
Ain Dubai

25
MINUTES
Mall of The Emirates

25
MINUTES
Dubai Mall & Burj Khalifa

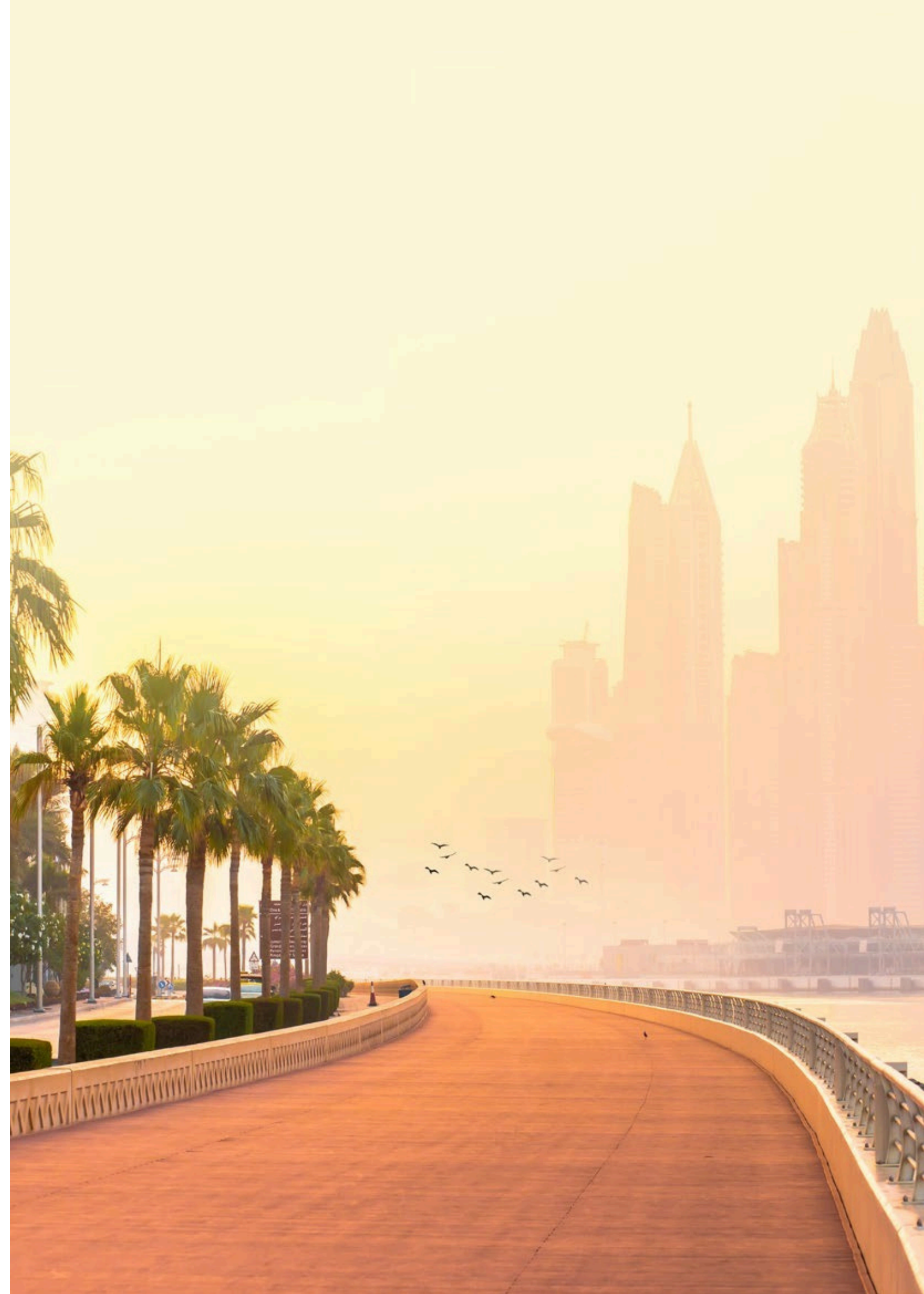
MINUTES
Museum of the Future

30
MINUTES
Dubai International Financial Centre

35
MINUTES
Dubai International Airport

38
MINUTES
Dubai World Central Airport

CONNECTING
THE CITY
WITH THE SEA



“EVERY DETAIL
FLOWS IN COMPLETE SYNERGY
WITH YOUR LIFE”





IMMERSED IN A NEW WAY OF *LIVING*

Just like the ocean, Ellington Beach House immerses the senses to reveal a new perspective of the world beneath its surface. Its spaces and interactions flow between one another with ease, seamlessly adapting to the needs and preferences of every resident.

Angular lines and contemporary colorways are brimming with personality, welcoming you to a place that eludes any preconceived notions of how a refined private beach lifestyle should be expressed.



ASPIRATION

17

THE ESSENCE OF HOME WITH
A BOLD DEPTH OF CHARACTER



19

ELLINGTON BEACH HOUSE

While maximising panoramic views, the interiors of Ellington Beach House connect residents to the sea through free-flowing textures, natural materials and open spaces. Cues from the surrounding environment bring an abundant sense of peace to a modern and expressive design consisting of graphic forms and contrasting accents of color.

Outside, carved trapezoidal masses expand across the grounds, allowing plants, trees and flowerbeds to find a home among their crystalline pattern.

AN ETHERAL

BALANCE

BETWEEN OUTSIDE
AND INSIDE

OCEAN

PARADISE

REDEFINED

DESIGN INTERTWINED WITH THE SEA

The individuality of such a unique location deserves the opportunity to be experienced to its fullest. Panoramic views from the building accentuate the wonder of Palm Jumeirah, while minimal framing with subtle beach-inspired screening allows residents to take in spectacular sunrises and sunsets in privacy.



**SECLUDED
FROM THE WORLD.
MADE FOR YOU**

The centrepiece of Ellington Beach House is a vibrant stretch of pristine shoreline offering cabanas, an outdoor refreshment area and the property's iconic sun loungers. Exclusively yours, it is a place to relax and recalibrate yourself with the calming pace of island life.

2.5

ELLINGTON BEACH HOUSE

ELLINGTON BEACH HOUSE

“A NEW MEANING
OF CALM CAN BE FOUND
ON THE *HORIZON*”

EBH
ELLINGTON BEACH HOUSE

ARRIVING AT
A LIFESTYLE ICON

THE OCEAN'S
DOORSTEP

29

ELLINGTON BEACH HOUSE

Ellington Beach House welcomes you with gentle refractions of light across the water, creating an immediate and unmistakable sensation of being moments from the ocean. There are two main entrances that invite you into the natural flow of the building, each with a spacious lobby area and its own understated charm.

Whichever grand entrance you arrive at, Ellington Beach House valets and porters will be waiting — at your service to make returning home a special experience each and every time.

**“ELEGANCE THAT
BELONGS BY THE OCEAN”**

From the Crescent Road side, you will be greeted with a sumptuous lounge area with art features and games just past the reception desk. Children have a dedicated playroom area, while professionals can be at peace when making use of contemporary workstations.

From your private beach entrance, the reception desk marks the beginning of a dynamic space with a lounge filled with artwork, a kids’ zone and games. Its openness embraces the full view of the ocean, complimenting the beach aesthetic with warm timbers, textured fabrics and natural stone elevated with bronze and black metal detailing.



**BEGIN A
NEW LIFESTYLE**



C L U B H O U S E

33

ELLINGTON BEACH HOUSE

At the heart of Ellington Beach House is a sumptuous lifestyle venue for private functions, meetings and presentations. With an open bar and show kitchen for private chefs, the Clubhouse is the perfect place for business occasions and secluded entertainment.

To captivate residents and their guests with the beauty of the ocean, the sumptuous lounge area extends outside to a shaded terrace overlooking the sea.





35

ELLINGTON BEACH HOUSE

**"A PLACE DESIGNED TO
ENCHANT RESIDENTS & THEIR GUESTS"**

WELLBEING

WELL DESIGNED

REJUVENATION
FOR

MIND &

39

IDYLLIC ENVIRONMENTS
FOR RITUALS OF SELF CARE



As a commitment to your health and wellness, the high-performance gym at Ellington Beach House retains the same openness as the rest of the interior. The space is designed to help you channel the uplifting energy of the sea with state-of-the-art fitness equipment, yoga, and pilates studio. To help replenish your body after a workout, the change rooms are equipped with a hydrotherapy pool, steam showers and saunas.

IN THE FLOW OF NATURE

Wellness spaces at Ellington Beach House extend from the indoor fitness centre and into the grounds of its nature-filled gardens. Here you will have a variety of sports facilities at your disposal. Including padel and tennis courts, a yoga space and an urban basketball area.





A DROP OF PEACE *IN THE OCEAN*

SECLUDED POOLS AMONG TRANQUIL GARDENS

Surrounded by nature, the adults' and children's swimming pools take design cues from superyacht decking and the striking shape of the building. Tucked away from the openness of the beach, the adults' infinity lap pool looks out across the ocean and features submerged loungers.

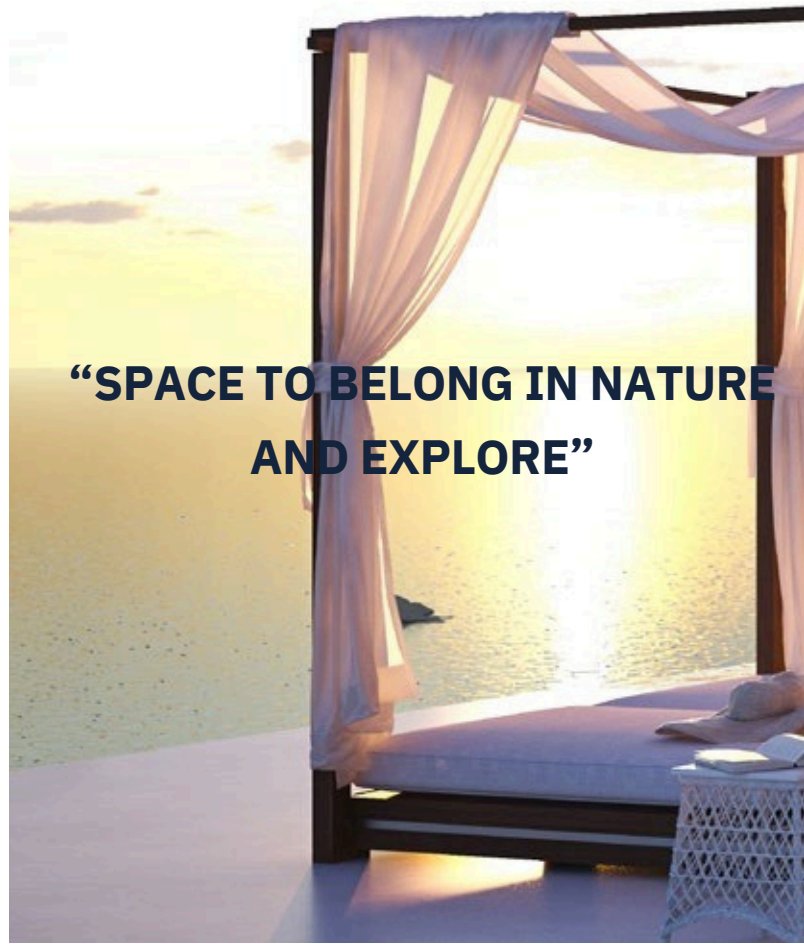


E N C H A N T M E N T

&

B E L O N G I N G

**A GEOMETRIC LANDSCAPE
THAT MERGES NATURE WITH DESIGN**



**“SPACE TO BELONG IN NATURE
AND EXPLORE”**

47

ELLINGTON BEACH HOUSE

The surrounding landscape of Ellington Beach House offers the shade of trees and cabanas, together with trapezoidal forms that reflect the building’s contemporary architecture. It offers space to belong in nature and explore quiet seating areas, a covered outdoor refreshment area, BBQ areas and opportunities to stay active with game tables, children’s play equipment, a half basketball area, Bocce Ball, Padel tennis and more.

**IMMACULATE
GARDENS THAT**

T H R I V E

**ON
DISCOVERY**

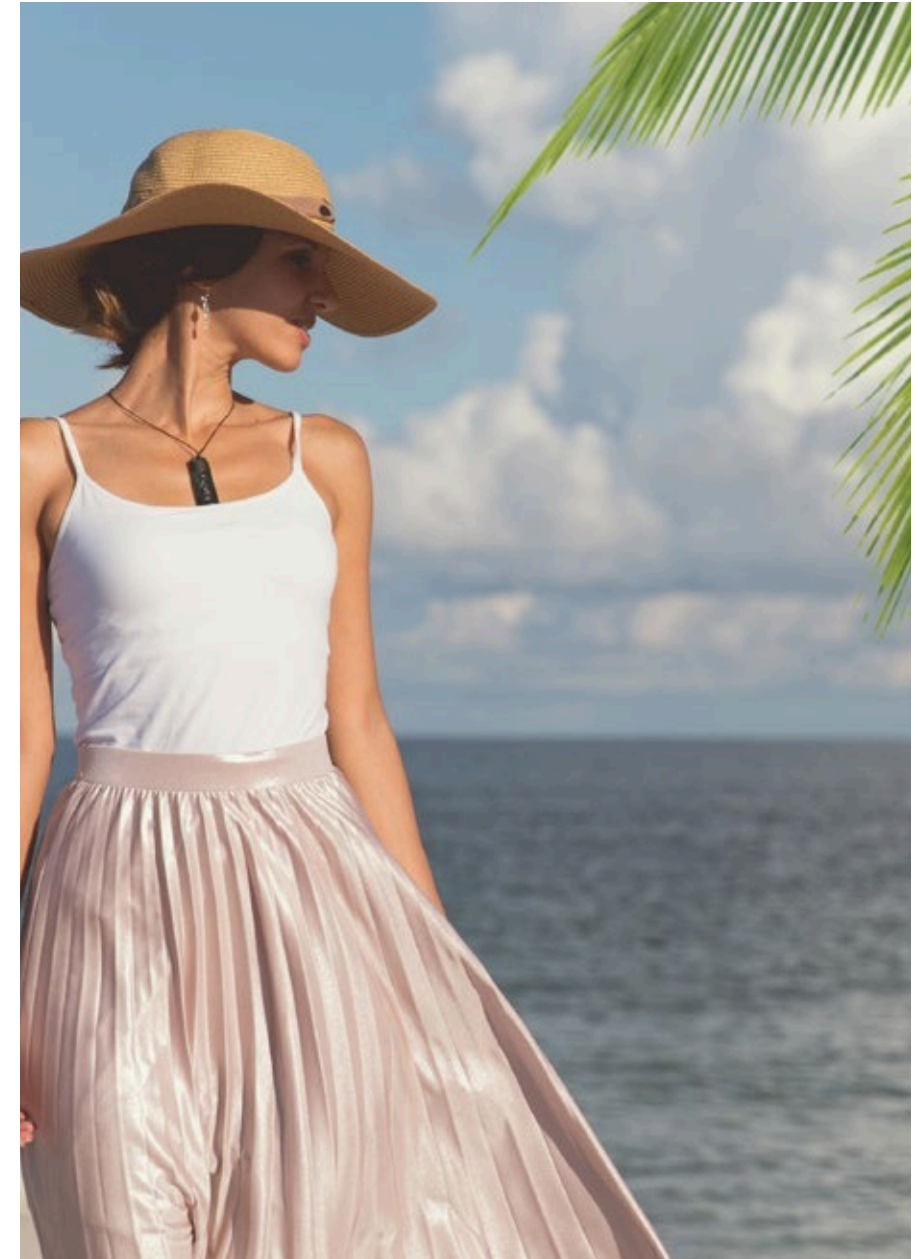


A LIFE

IN TUNE WITH

NATURE

The apartments and penthouses of Ellington Beach House go beyond what is expected of private beach living as part of the ever-expanding island community of Palm Jumeirah.





APARTMENT
LIVING AREAS

55



ELLINGTON BEACH HOUSE

Directly adjacent to the dining room, living areas perfectly frame the horizon. Filtered through wide bronze-tinted windows, with curtain pockets and slim profile mullions, sunlight is gently introduced to the apartment, blanketing the stone floors in warm and welcoming tones.





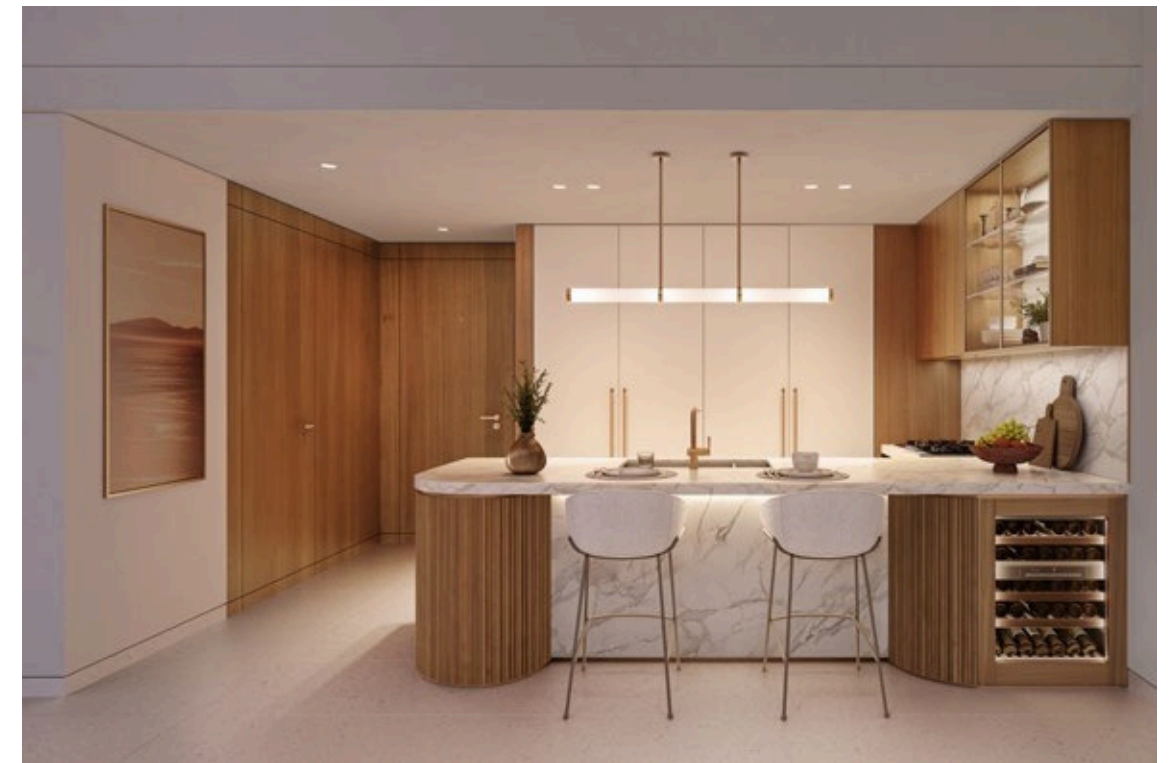


... as it
... If this is
... then it's perfect.
If not, arm yourself with a paper
towel and be ready to wipe.
In the photo of the Raspberry &
Vanilla Lollipops, the ice cream
was poured directly into the
glasses after being made, and
it was left to freeze until solid.
When the shot glasses came out

These Raspberry & Vanilla Lollipops are still in shot
glasses, showing frost, to indicate they were frozen.
03.5. BO 125, 1/0mm, Macro L.

For the photo of Pineappl
because the art director h
a frosted or dewy look. Ye

APARTMENT
KITCHENS



The building's modern kitchens will be treasured by those who crave a life intertwined with design. Mid-tone wood cabinets demonstrate the apartment's impeccable craft while reflective glass, metal signature cabinets, Miele appliances and champagne-gold pull-out tap along with signature hardware and bespoke storage features make an unmistakable statement of refined elegance.



APARTMENT
BATHROOMS

63



Bathrooms bring elements of natural beauty into your home with slatted teak shower flooring, stone-faced drawers, stone walls and floors, and a bush hammered feature wall. The bathroom treats you to a rain shower with a hand spray, as well as a contemporary free-standing bath with a floor-mounted tub filler. The feeling of calm and space is elevated further with backlit mirrors and a glazing wall in the bedroom.





APARTMENT
BEDROOMS



67

ELLINGTON BEACH HOUSE

Bedrooms follow the flow of the ocean while looking out across its vast expanse of blue. A sophisticated yet cosy interior opens up to your island surroundings with a curtain cove that reveals the beauty of the Gulf to begin every day.





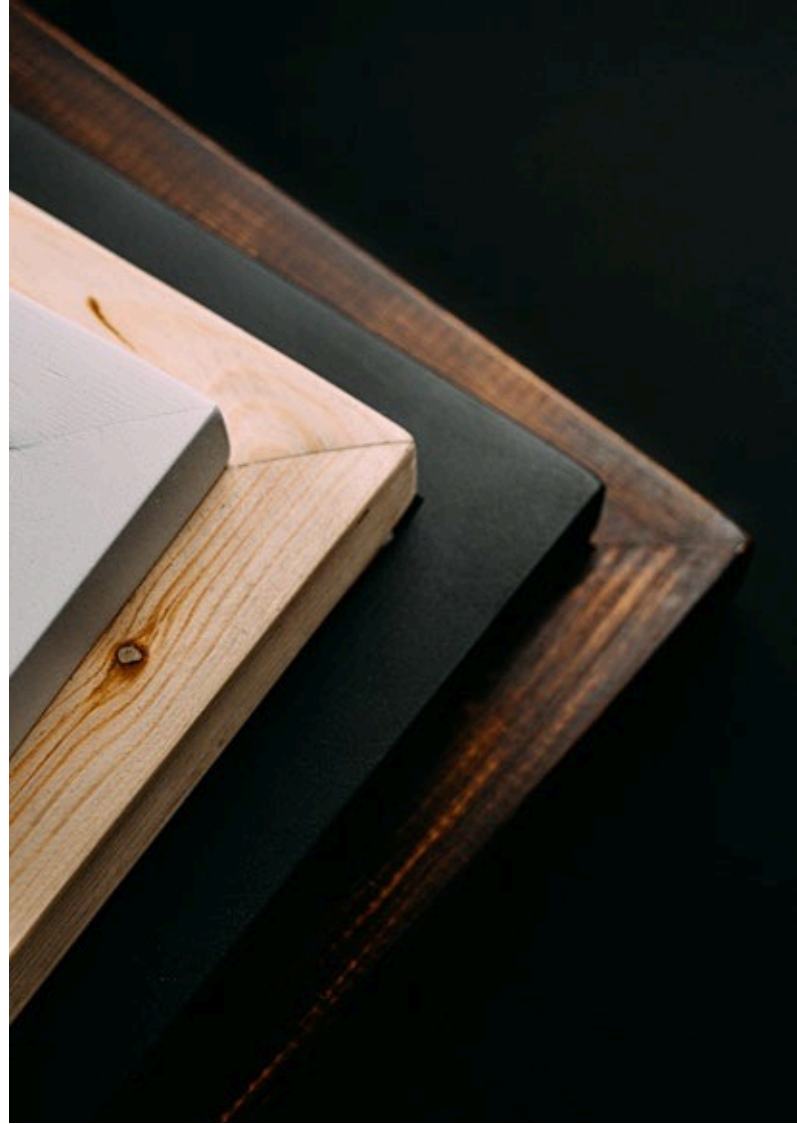


ELLINGTON BEACH HOUSE SOUTH

ELLINGTON BEACH HOUSE NORTH

- | | | | | | | | |
|-----------------------------------|--|----------------------------------|-----------------------------------|---|---|--|---|
| 01
MAIN
ENTRANCE | 06
SOUTH LOBBY
RECEPTION | 11
INDOOR
FITNESS AREA | 16
LEISURE AND
LOUNGE POOL | 21
SHADED KIDS'
POOL | 26
OUTDOOR
ENTERTAINMENT
& CIGAR TERRACE | 31
NORTH LOBBY
LOUNGE AREA | 36
ACCESS TO
OUTDOOR ACTIVITY
ZONE |
| 02
DROP-OFF
AREAS | 07
SOUTH LOBBY
LOUNGE AREA | 12
OUTDOOR
FITNESS AREA | 17
BAJA
SHELF | 22
OUTDOOR KIDS'
PLAY AREA | 27
OUTDOOR LOUNGE
TERRACE | 32
COMMUNAL OFFICE
& WORKSPACES | 37
VIEWING DECK |
| 03
VALET
PARKING | 08
LIFT
LOBBIES | 13
URBAN
FITNESS TREE | 18
PALM JUMEIRAH
BEACH | 23
BARBECUE AREA | 28
BOCCE BALL COURT | 33
NORTH LOBBY
TERRACE | 38
OUTDOOR GAMES
TABLE ZONE |
| 04
COVERED VISITORS
PARKING | 09
CHANGE, STEAM
SHOWER & SAUNA
ROOMS | 14
YOGA & PILATES
STUDIO | 19
SUN LOUNGERS
AREA | 24
CLUBHOUSE | 29
NORTH LOBBY
ENTRANCE | 34
INDOOR KIDS' PLAY
AREA | 39
URBAN BASKETBALL
AREA |
| 05
SOUTH LOBBY
ENTRANCE | 10
HYDROTHERAPY
POOL | 15
ACCESS TO POOL
AND DECK | 20
OUTDOOR
REFRESHMENT AREA | 25
KITCHEN/BAR
FOR PRIVATE
FUNCTIONS | 30
NORTH LOBBY
RECEPTION& | 35
BATHROOM
FOR PEOPLE OF
DETERMINATION | 40
PADEL TENNIS
COURT |

THE QUALITY OF OUR CRAFT ALONE SAVES
COUNTLESS WASTED MATERIALS



73

ELLINGTON BEACH HOUSE

As a leading design-led developer, we believe that sustainability must be at the heart of our thinking. In addition to following Dubai Green Building regulations and Wellness Initiatives, we begin with floor plans that encourage natural lighting and use locally sourced materials and sustainable manufacturing processes wherever possible.

This includes products made from recycled materials, energy-efficient lighting and appliances, water-saving sanitary ware, FSC-certified wood, low VOC paints, and light-reflective facades.



ELLINGTON

SUSTAINABILITY

Our buildings are cooled and heated with low noise energy-efficient FCUs, with a system that collects condensation for irrigation. Our fitness centres are equipped with eco-conscious facilities. Our parking spaces accommodate charging points for electric vehicles. As our developments continue to expand across Dubai, our focus is on going above and beyond best practices to support environmentally friendly living with beautiful design.



75

ELLINGTON BEACH HOUSE

ELLINGTON

ART FOUNDATION

THE NEXT GENERATION
OF NEW IDEAS

We nurture the UAE's emerging talent across painting, photography, sculpture, installation and mixed media. Through workshops and competitions, we use our position as a leading design-led developer to help raise the profile of regional artists by showcasing their work in our buildings.

TOTALLY HOME

REAL ESTATE LLC



97145548620



971564951052



sales@totallyhomerealestate.com



<https://totallyhomerealestate.com>