



# GOLF GATE 2

**DAMAC**  
HILLS



An aerial photograph of a golf course. The image shows a green fairway, a sand trap, and several trees. Long shadows are cast across the grass, suggesting it is either early morning or late afternoon. The overall scene is lush and green.

AN  
ELEVATED  
LIFESTYLE  
AWAITS





---

A DISCOVERY  
OF SERENE  
GOLF-COURSE  
LIVING

---





WHERE  
LIFE MEETS  
LEISURE

Presenting



## GOLF GATE 2

Open your eyes to a world of natural beauty and tranquillity at Golf Gate 2. Wake up to fresh air and the tranquil sound of nature every morning and enjoy a peaceful, family-friendly environment surrounded by lush greenery and stunning golf course views.





# EXPERIENCE LUXURIOUS LIVING AT ITS BEST



At Golf Gate 2, luxury living is a way of life. From designer finishes to spacious layouts, every detail has been thoughtfully put together for ultimate comfort and sophistication.







# UNWIND IN STYLE

Immerse yourself in a state of relaxation by our podium pools as you soak up the sun and unwind amidst the tranquillity of a luxurious community.







## WORK OUT WITH A VIEW

Get fit, feel great and enjoy the serene ambience of the state-of-the-art gym that offers an unparalleled workout experience with stunning views of the golf course.







# YOUR HAVEN OF SOPHISTICATION

Step into a world of sophistication and elegance with apartments that boast high-end finishes and offer style, comfort and stunning views of a lush green golf course.







# TWO BEDROOM INTERIORS

















# AMER BEDROOM INTERIORS





# TRUMP INTERNATIONAL GOLF CLUB, DUBAI

Located in the heart of DAMAC Hills, Trump International Golf Club, Dubai exceeds all expectations. This stunning property features a magnificent championship golf course designed by world-renowned architect, Gil Hanse, and further boasts state-of-the-art golf facilities, a world-class floodlit par 3 golf course, and a magnificent Clubhouse.

For those who belong to a different league, this is your crowning glory.



*Trump International Golf Club*

DUBAI



Slip into your swimwear, grab your goggles and cool off at Malibu Bay – the always-trendy wave pool at DAMAC Hills. Make time to bobble, dunk and jump the ocean-like waves or relax in the shallows with beach-like vibes, hip F&B outlets and lots more.

# MAKE A SPLASH IN YOUR BACKYARD





---

## A WORLD OF CONVENIENCE

---

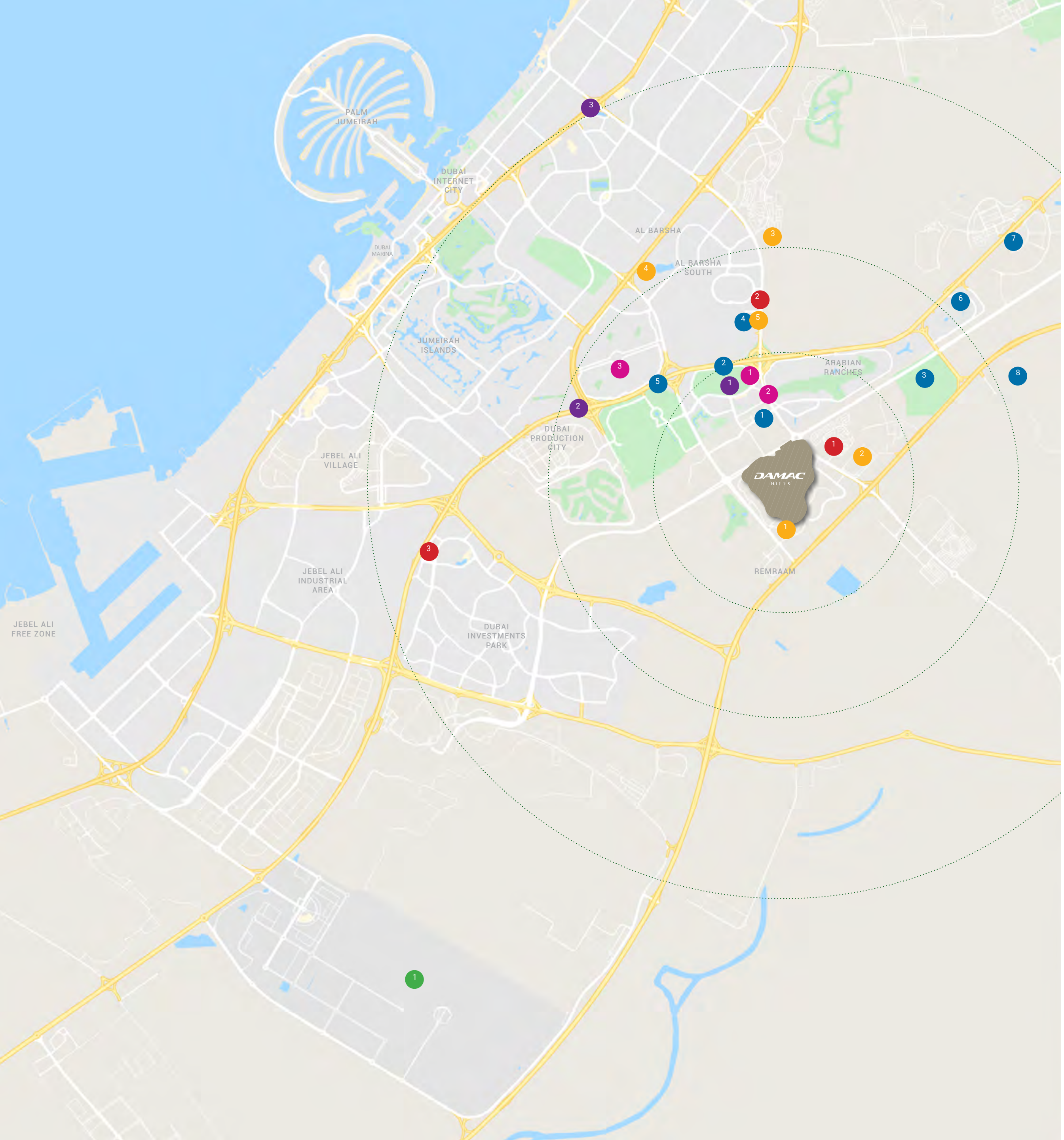


From food markets and outdoor movie nights to an activity-packed community centre, petting farm, stables and more, you will find everything you need right here at home. Play your favourite games at our sports facilities or do your weekly shopping at one of our many supermarkets.

The community also comes with a complete family care facility and a reputed school, making it the perfect address for your family.







# DAMAC HILLS CLOSE TO EVERYTHING

## SPORTS AND LEISURE

- 1 Dubai Polo & Equestrian Club – 10 minutes
- 2 Dubai Autodrome – 12 minutes
- 3 The Plantation Equestrian and Polo Club – 11 minutes
- 4 Miracle Garden – 13 minutes
- 5 Dubai International Stadium – 14 minutes
- 6 Global Village – 14 minutes
- 7 IMG World – 14 minutes
- 8 Hamdan Sports Complex – 15 minutes

## MALLS

- 1 First Avenue Mall – 11 minutes
- 2 City Centre Me'aisem – 14 minutes
- 3 Mall of the Emirates – 24 minutes

## HOSPITALS

- 1 Aster Medical Centre – 9 minutes
- 2 Mediclinic Parkview Hospital – 12 minutes
- 3 NMC Royal Hospital – 19 minutes

## HOTELS

- 1 Park Inn by Radisson – 10 minutes
- 2 Studio One Hotel – 9 minutes
- 3 Five Hotel Jumeirah Village Circle – 19 minutes

## AIRPORT

- 1 Al Maktoum International Airport – 28 minutes

## SCHOOLS

- 1 Jebel Ali School – 5 minutes
- 2 Fairgreen International School – 11 minutes
- 3 Global Indian International School – 16 minutes
- 4 Safa Community School – 18 minutes
- 5 Kings' School – 21 minutes





# DAMAC HILLS A CLOSER LOOK

## CLUSTERS

- 1 Trinity
- 2 Pelham
- 3 Rochester
- 4 Rockwood
- 5 Richmond
- 6 Topango
- 7 The Field
- 8 Piccadilly Green
- 9 Queen's Meadow
- 10 Silver Springs
- 11 Legends
- 12 Whitefield
- 13 Cavalli Estates
- 14 Brookfield
- 15 Bellavista (Carson) A, B, C
- 16 **Golf Vita**
- 17 Artesia B, C, A
- 18 The Trump Estates
- 19 Ventura Mall
- 20 Golf Promenade 2, 3, 4, 5
- 21 Loreto 1, 2, 3
- 22 Jasmine & Orchid
- 23 Calero
- 24 Phoenix
- 25 The Turf
- 26 The Flora
- 27 Long View
- 28 Veneto
- 29 Golf Panorama, Veduta, Vista, Terrace

## ESSENTIALS

- 1 Jebel Ali International School
- 2 CreaKids Nursery
- 3 Line Circle Cafe
- 4 Food Trucks
- 5 Carrefour Supermarket
- 6 Corner Barber
- 7 4Her Salon
- 8 Community Centre
- 9 Radisson Dubai DAMAC Hills
- 10 Trump International Golf Club Dubai
- 11 Prato/71 Sports Bar
- 12 Spinneys Supermarket
- 13 Bakericious Supermarket
- 14 Saudi German Clinic
- 15 Medicina Pharmacy
- 16 Viva Supermarket
- 17 Maison de Coiffure

## AMENITIES

- 1 Basketball Court
- 2 Football Court
- 3 Tennis Court
- 4 Cricket Field
- 5 Volleyball Court
- 6 BBQ Area
- 7 Kids Play Area
- 8 Kids Crazy Golf
- 9 Ice Rink
- 10 Horse Stable
- 11 Catch & Release
- 12 Jogging Track
- 13 Skate Park
- 14 Central Park
- 15 Picnic Park
- 16 Fruit Park
- 17 Wet Wadi Fountain
- 18 Lake
- 19 Fishing Lake
- 20 Malibu Bay - Wave Pool
- 21 Pet Farm
- 22 Golf Course
- 23 Events Area
- 24 Community Center
- 25 Padel Court



UNIT PLAN  
FLOOR PLAN

---



**GOLF GATE 2**

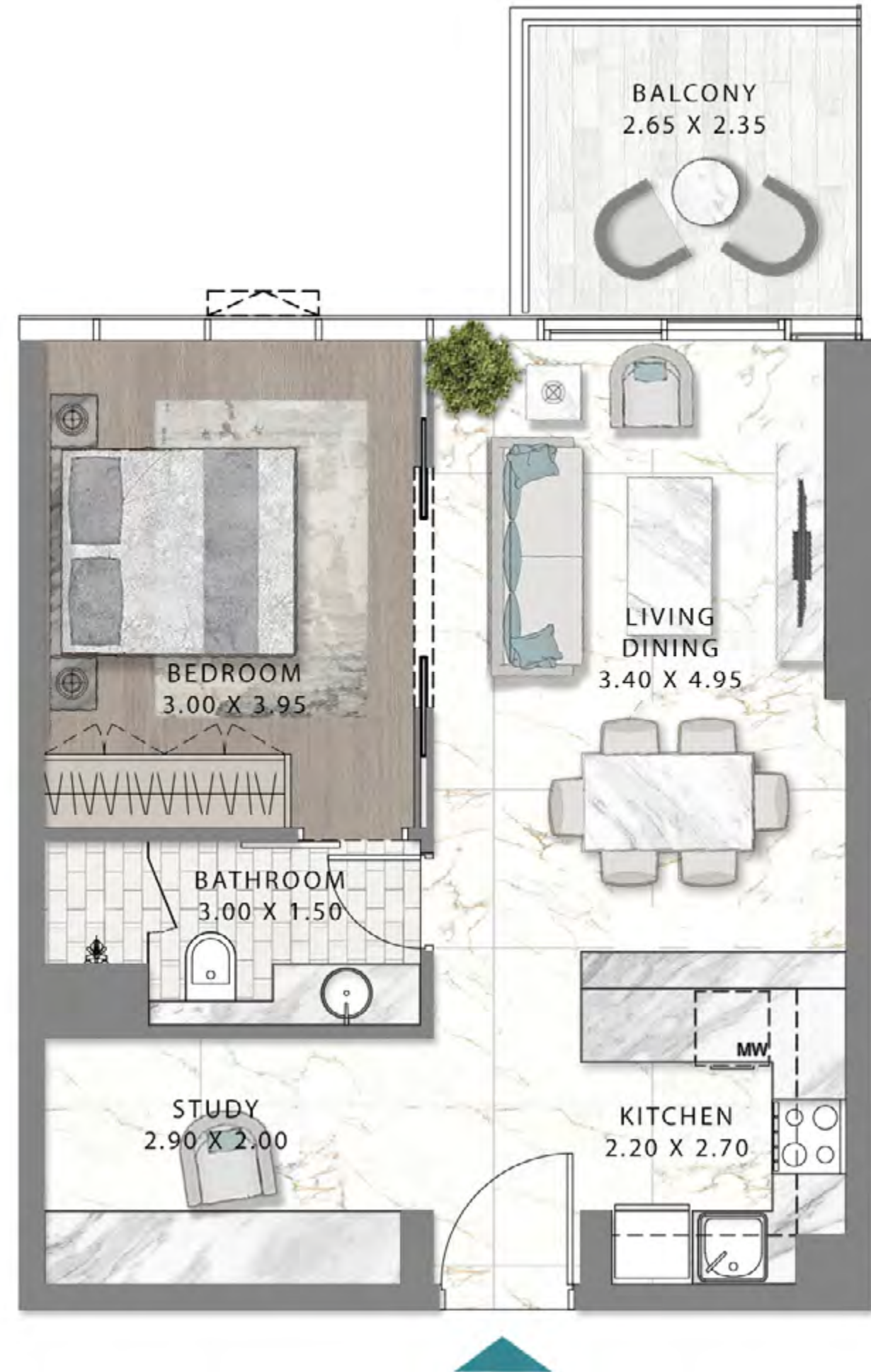


---

# UNIT PLAN

## 1 BEDROOM-TYPE 1B-A

---



Disclaimer: All pictures, plans, layouts, information, data and details included in this brochure are indicative only and may change at any time up to the final 'as built' status in accordance with final designs of the project, regulatory approvals and planning permissions.



---

# UNIT PLAN

## 2 BEDROOM-TYPE 2B-A

---



Disclaimer: All pictures, plans, layouts, information, data and details included in this brochure are indicative only and may change at any time up to the final 'as built' status in accordance with final designs of the project, regulatory approvals and planning permissions.



---

# UNIT PLAN

## 2 BEDROOMS-TYPE 2B-B

---



Disclaimer: All pictures, plans, layouts, information, data and details included in this brochure are indicative only and may change at any time up to the final 'as built' status in accordance with final designs of the project, regulatory approvals and planning permissions.



# FLOOR PLAN LEVEL 3



Disclaimer: All pictures, plans, layouts, information, data and details included in this brochure are indicative only and may change at any time up to the final 'as built' status in accordance with final designs of the project, regulatory approvals and planning permissions.



# FLOOR PLAN LEVELS 4-10



Disclaimer: All pictures, plans, layouts, information, data and details included in this brochure are indicative only and may change at any time up to the final 'as built' status in accordance with final designs of the project, regulatory approvals and planning permissions.



# FLOOR PLAN LEVELS 11-29



Disclaimer: All pictures, plans, layouts, information, data and details included in this brochure are indicative only and may change at any time up to the final 'as built' status in accordance with final designs of the project, regulatory approvals and planning permissions.



# TOTALLY HOME

## REAL ESTATE LLC



97145548620



971564951052



[sales@totallyhomerealestate.com](mailto:sales@totallyhomerealestate.com)



<https://totallyhomerealestate.com>