



H
HAMILTON
HOUSE

YOUR
EVERYDAY
HOLIDAY
DESTINATION





LIVE IN *DESIGN*

Ellington homes are designed to inspire. Our vision is to create living spaces that add value and contentment every day, supporting people as they journey towards their dreams and aspirations. Built in thoughtfully selected locations to ensure superb long-term return on investment, Ellington Properties is known for its resort-style pool courtyards, astounding landscaping, comprehensive fitness and child play facilities, and tailored interiors.

Along with sought-after communities in prestigious districts such as Downtown Dubai and Palm Jumeirah, Ellington's portfolio include elegant and serene residences such as Hamilton House, located in the exuberant young neighborhood of Jumeirah Village Circle. From design to delivery, our team curates every aspect of the construction, ensuring that we continue to meet our promise and commit to our long-term responsibility to our customers.

WE BUILD *HOMES THAT INSPIRE*

We are Dubai's leading boutique property developer that values functionality as much as aesthetics. We believe in creating spaces that enable people to live better lives, which is why we craft homes with meticulous attention to every last detail.

JUMEIRAH VILLAGE CIRCLE

Home to eleven of Ellington Properties' most revered developments, Jumeirah Village Circle is a tranquil, serene community situated in the heart of Dubai and is close to all the major attractions and amenities the city has to offer.

The neighborhood is also home to a number of parks and schools with a selection of entertainment and leisure options. Adding to its strategic location is a mix of multi-family residential complexes that are perfect for families and residents looking for a quiet shelter from the hustle and bustle of the city.



YOUR HOME
WITHIN A
PEACEFUL
NEIGHBORHOOD



2 Minutes
Circle Mall



7 Minutes
Dubai Hills Mall



10 Minutes
Mall of the Emirates



10 Minutes
Dubai Marina



12 Minutes
Ain Dubai



15 Minutes
Downtown Dubai
& Burj Khalifa



15 Minutes
Burj Al Arab



18 Minutes
Palm Jumeirah



20 Minutes
Jumeirah Beach



20 Minutes
Museum of the Future



28 Minutes
Dubai World Central



30 Minutes
Dubai International
Airport

DUBAI WORLD CENTRAL

ELLINGTON PROPERTIES
COLLECTION IN
JUMEIRAH VILLAGE CIRCLE

- | | |
|---------------------|------------------------|
| 01 HAMILTON HOUSE | 07 BELGRAVIA HEIGHTS I |
| 02 BELGRAVIA | 08 THE PORTMAN |
| 03 BELGRAVIA SQUARE | 09 BELGRAVIA III |
| 04 BELGRAVIA II | 10 EATON PLACE |
| 05 HARRINGTON HOUSE | 11 SOMERSET MEWS |
| 06 THE SLOANE | |



H
HAMILTON
HOUSE

WELCOME TO

H HAMILTON HOUSE

An elegant mid-rise tower of grey and whites comprising of 101 curated residential units from studios, 1 and 2 bedroom apartments.

Hamilton House's residents will benefit from the vast and sumptuous living space while enjoying a relaxed lifestyle.

The contemporary residential development is complemented by thoughtfully-designed amenities that inspire a balanced lifestyle to elevate your mornings and evenings.

Located in a quiet residential neighborhood with easy access to the community's amenities and main highways, Hamilton House brings a holiday experience to its own residents.



CONTEMPORARY FAÇADE

Hamilton House's façade adds a unique personality and character to the building with its appealing yet contemporary façade design and its contrasting palette of white and grey with hints of copper. The building's main entrance is highlighted by rich and textural travertine, opening up to a full-height lobby window that echoes the inherent charm of Ellington Properties' developments.





YOUR DOORWAY TO A **JOYFUL** PLACE

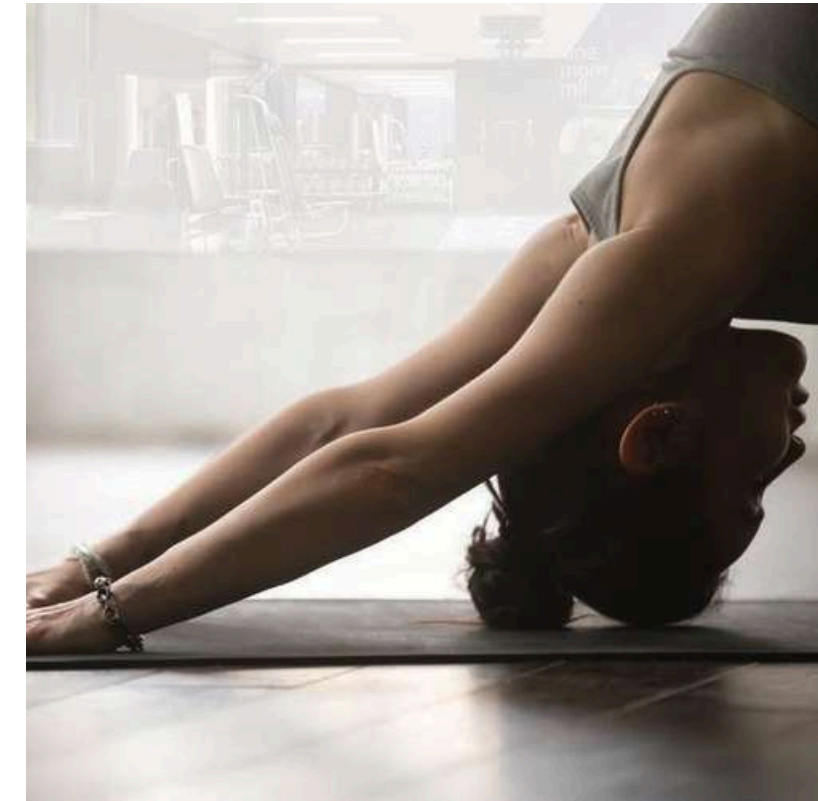
The lobby with its vibrant atmosphere will let you feel the building's natural aesthetic with a bold punch. The elegant lobby with double-height ceilings and dramatic full-length windows captures the changing ambiance of the space through the day and into the night. Making it a warm and inviting place for residents and their guests, the lobby is designed as an extension of the residents' living space, equipped as a functional workspace, and play area with various board games, puzzles, and décor.



A HOLIDAY-WORTHY EXPERIENCE

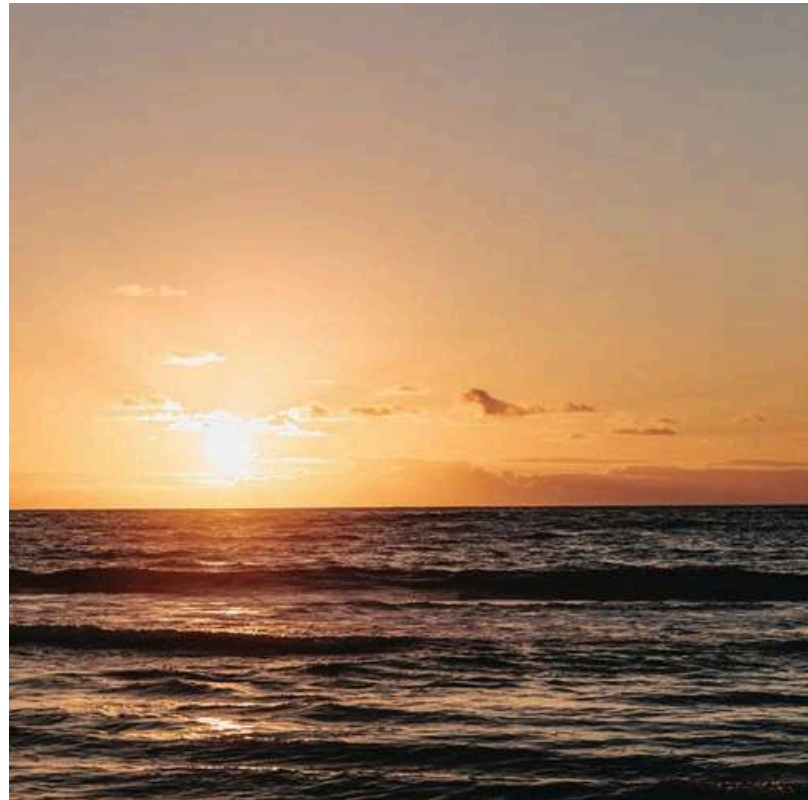
To relax and enjoy, there is nothing like a refreshing dip in the pool. With excellent designs and indulgent features, the pool at Hamilton House takes your swim to another level. The pool deck allows residents a private and relaxing pool experience with its hospitality-inspired lounge furniture. A convenient summer-worthy space that will leave you feeling cool all season long.





AN **ACTIVE** LIFESTYLE

Enjoy state-of-the-art facilities, expansive floor space, and a diverse range of equipment that guarantees a complete workout at Hamilton House's fitness and yoga studio. The studio features premium equipments, with unobstructed views of the pool. An idyllic place for a full-body workout to ensure a healthy routine at home.



SUNSET-INSPIRED COLOR PALETTE

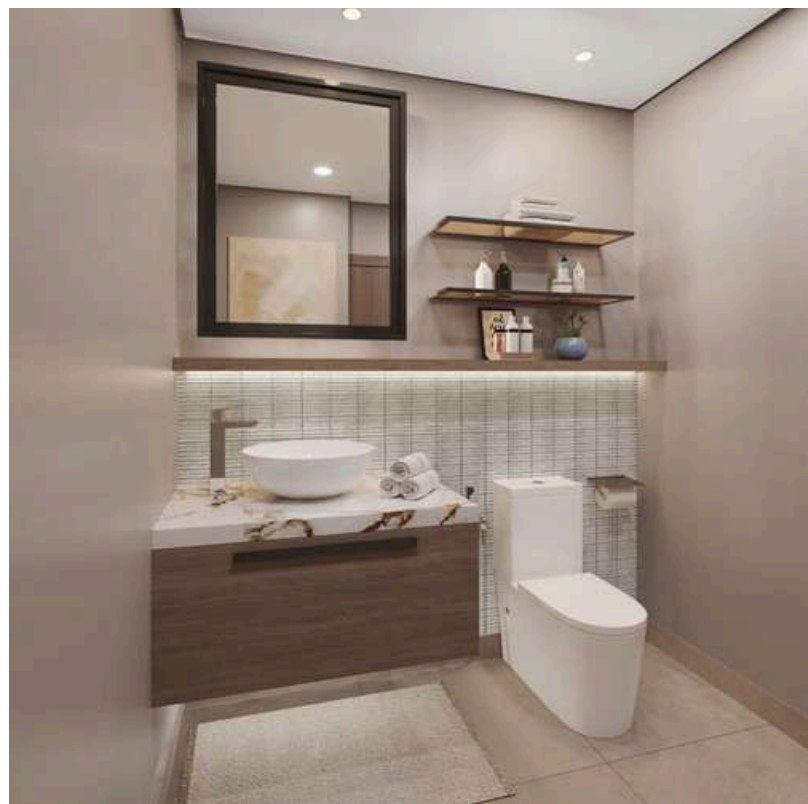
Dynamic and bright, Hamilton House exudes a sophisticated yet vibrant urban living. The warm sunset-inspired color palette embraces residents with a tranquil and comfortable atmosphere. Walnut woods, tinted glass, warm tiling, and layered lighting combine into this remarkable scheme.





A FEELING OF ***SPACE & FLOW***

Every corner shows the beauty and the detailed care of the exquisite kitchen at Hamilton House. With ample storage and counter space, high-quality appliances, and custom-designed contemporary kitchen cabinetry, the open plan layout create a feeling of space and flow making the kitchen claim its rightful place as the heart of the home.



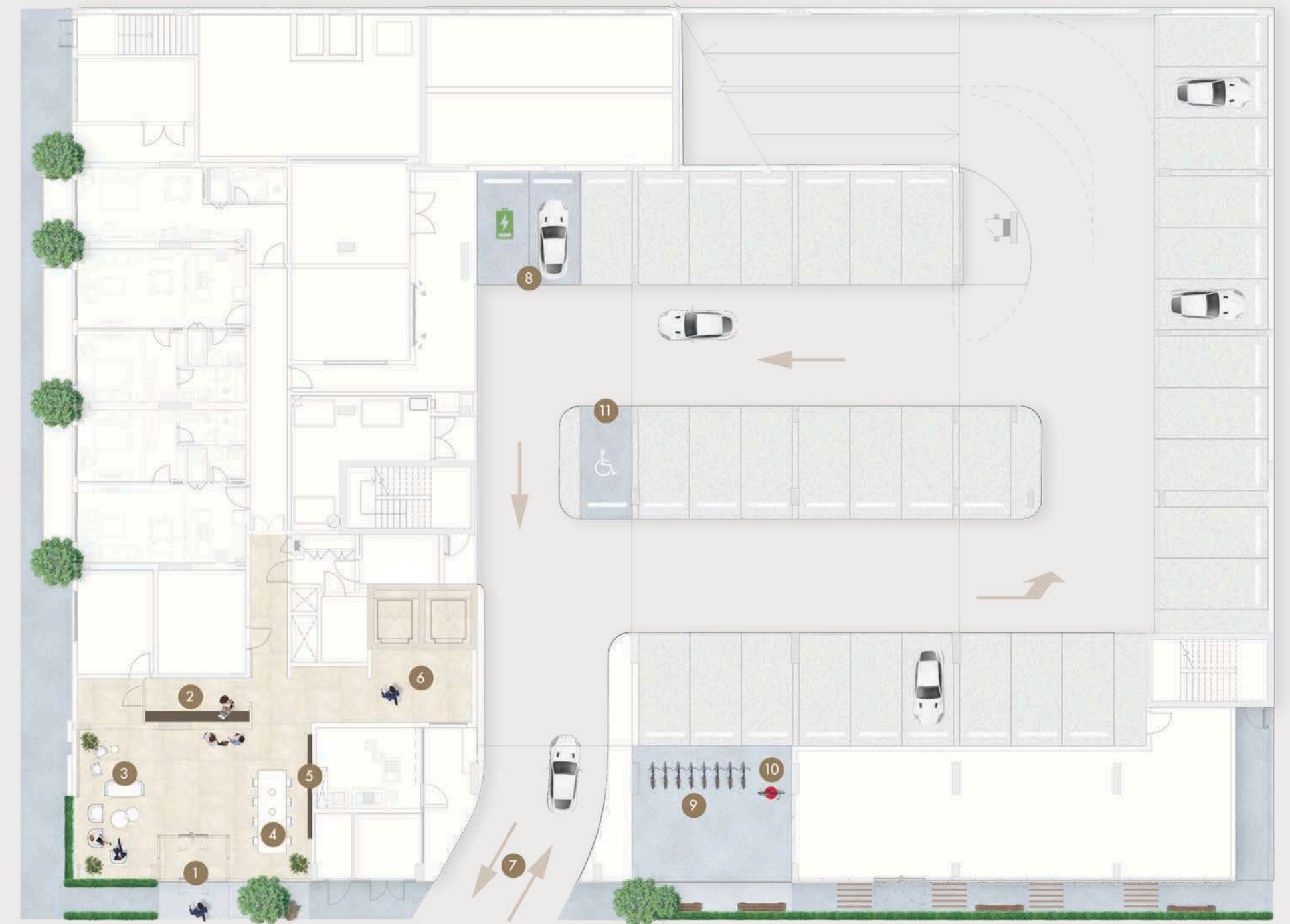
FORM & ***FUNCTION***

The bathroom at Hamilton House is both elegant and functional, with its generous storage and display spaces, sintered countertops, and feature mosaic walls. A spa-like bathroom feature elevating your daily routines.



GROUND FLOOR AMENITIES PLAN

- 01 MAIN ENTRANCE
- 02 LOBBY RECEPTION
- 03 LOBBY LOUNGE AREA
- 04 COMMUNAL TABLE
- 05 LIBRARY WALL
- 06 LIFT LOBBY
- 07 PARKING ENTRANCE
- 08 EV CHARGING STATIONS
- 09 BICYCLE PARKING
- 10 BICYCLE MAINTENANCE AREA
- 11 PARKING FOR PEOPLE OF DETERMINATION



SCAN TO VIEW
THE INTERACTIVE
AMENITIES PLAN



FIRST FLOOR AMENITIES PLAN

- | | |
|--------------------------------------|--|
| 01 LEISURE AND LOUNGE POOL | 10 OUTDOOR LOUNGE AREA |
| 02 CABANAS | 11 FITNESS CENTER |
| 03 BAJA SHELF | 12 FEMALE CHANGING ROOM |
| 04 POOL SUN LOUNGERS AREA | 13 MALE CHANGING ROOM |
| 05 SHADED KID'S POOL | 14 STEAM SHOWER |
| 06 OUTDOOR SHOWER | 15 PEOPLE OF DETERMINATION CHANGE ROOM |
| 07 OUTDOOR KID'S PLAY AREA | 16 YOGA STUDIO |
| 08 BARBEQUE AREA WITH SUNKEN SEATING | 17 LIFT LOBBY |
| 09 ACTIVITY DECK | |



SCAN TO VIEW
THE INTERACTIVE
AMENITIES PLAN



RECENTLY HANDED-OVER PROJECTS

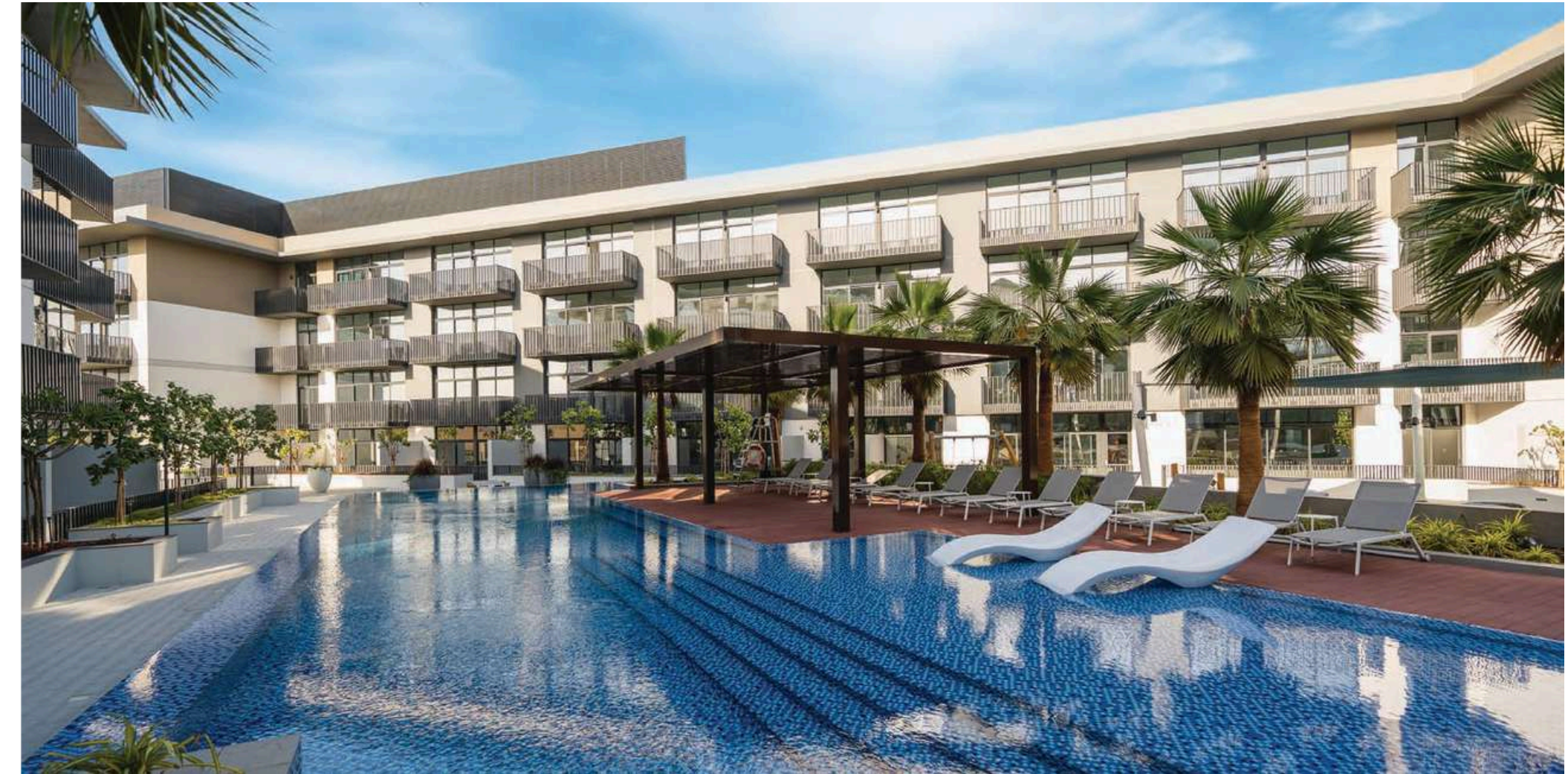


W I L T O N — TERRACES —

INDULGE IN THE FUTURE OF LIVING

Standing high in one of Dubai's most iconic communities, Wilton Terraces is a thriving development where young entrepreneurs and new families can lead an affluent and exciting lifestyle. Overlooking some of the city's most spectacular landscapes, the development comprises of 283 residences and is home to a state-of-the-art fitness centre, kids' play area, a relaxing pool with water deck and barbecue

DELIVERED IN 2021
MOHAMMED BIN RASHID CITY



BELGRAVIA III CRAFTED FOR LIVING

Belgravia III comes with a fresh, cool palette with penny-round tiles, white joinery and light wood accents. The project is home to our largest courtyard yet, alongside two spacious, double-heighted lobbies. As a uniquely designed community, it offers 260 modern studios, 1 and 2-bedroom apartments, and townhouses, with a host of excellent amenities.

DELIVERED IN 2021
JUMEIRAH VILLAGE CIRCLE

ELLINGTON PROPERTIES PORTFOLIO



Set among a community of luxury and sustainability, Ellington House breathes new life into its idyllic surroundings. The building has an innate quality of blending in and standing out simultaneously, with dreamy, light-filled multifamily apartments overlooking Dubai Hills Golf Course and out across the city. From one of the Emirates' most prestigious locations, Ellington House offers a fresh perspective on living well and investing wisely.



Berkeley Place is Ellington Properties' latest design-led project that raises the bar in exceptional living. The residence features a slew of wellness and entertainment amenities that add to its exclusivity. Berkeley Place stands out for its distinct geometries as it soars against Dubai's dazzling city views. The rooftop captures the exclusivity of the residence with a slew of amenities including an infinity pool, a lavish lounge with viewing deck.



Kensington Waters serves as the perfect backdrop to lead a contented, modern, and fulfilling life. The development's design and architecture offer residents a unique space where they can experience life in full, grow, expand and thrive. Heightened ceilings, generous outdoor areas, generous storage spaces and wide windows provide room to energise, refresh and reboot, increasing productivity and encouraging self-initiative and an active lifestyle.



An icon of contemporary architecture designed for optimum community living, Belgravia Square encompasses 225 beautifully crafted studios, 1 and 2-bedroom apartments. With amenities such as two double-heighted lobbies, dramatic staircases and bespoke art installations, it's the perfect home to lead a fulfilling life.



The Sloane by Belgravia Heights is a Miami-inspired residential tower that echoes coastal vibes and a beachside lifestyle. The project encompasses an active and dramatic indoor and outdoor fitness centre, an outdoor cinema, an outdoor BBQ, kitchen and picnic areas, a lounge and lap pool, a dramatic and bright lobby, and a rooftop pet park.



With a Scandinavian design approach, a timeless grey palette and beautiful accents of white and warm beige tones, the look and feel of this development invites minimalism, simplicity and functionality, creating a more holistic living experience for our residents.



The project is designed for balanced lifestyles, where the apartments and residences flow uninterrupted into outdoor spaces and parks, seamlessly extending the interiors. It features a London-inspired aesthetic and an infinity edge swimming pool overlooking the park.



Wilton Terraces creates an atmosphere where young families can connect, share and grow. The project includes a fitness centre and yoga room, a children's pool and a family pool with a full lap, indoor and outdoor children's play areas, and BBQ areas.



DT1 is a trendsetter for the new market standard, incorporating art and amenities in the heart of Dubai. The project reflects the unique and luxurious expression of residences, wrapped in an understated yet elegant facade, and offering a truly distinct setting inside out.



Harrington House exemplifies a comprehensive and balanced approach to urban living, inspired by the breathtaking Arabian Desert and its natural richness, via a plethora of interwoven features that cater to a happy and healthy existence. It is a development that embodies wellbeing, pleasure, and health thanks to neutral tones and a warm color palette.



The Portman captures the essence of contemporary, modern living with well-designed residences and family-friendly amenities. Located in Jumeirah Village Circle, one of the most sought-after communities in Dubai, the residential building is centered on the principle of balance and vibrancy with 173 residential units ranging from studios to 1 and 2-bedroom apartments.

TOTALLY HOME

REAL ESTATE LLC



97145548620



971564951052



sales@totallyhomerealestate.com



<https://totallyhomerealestate.com>