

THE PORTMAN

SERENE, DESIGN-INSPIRED LIVING





LIVE IN *DESIGN*

Since 2014, we have approached every project with a thorough grasp of the human experience. We feel that our commitment to craftsmanship and attention to detail distinguishes our developments from the rest of Dubai's skyline in ways that few other buildings can.

We are Dubai's leading boutique property developer, but we started as a family, a family that creates homes. We nurture elevated living from the ground up. Rather than following trends, we trust our instincts about what will exceed our clients' expectations.

It's a philosophy we call 'Live in Design,' a way of thinking that build houses, places, and environments that are perfectly in tune with your lifestyle.

In a span of many years, we have established our name and delivered a collection of contemporary and welcoming communities for individuals who value design and unparalleled lifestyle. Tailored living areas that reflect the real meaning of home. We continue to push for craft and design as a driver for development within the Dubai art community through our developments and related initiatives.

JUMEIRAH VILLAGE C I R C L E

Jumeirah Village Circle is an investment hotspot located just a few minutes away from the hustle and bustle of Dubai, yet within reach to famous landmarks and destinations. Set amongst landscaped gardens and parks, it is a family-friendly community with a set of amenities that cater for various needs with an array of houses from townhouses and villas to luxurious modern apartments, making it an ideal spot for homeowners.

Ellington's portfolio in Jumeirah Village Circle include world-class amenities and top-level interior finishes, exclusively designed to attract an equal mix of families, young couples and bachelors who enjoy the calm atmosphere of the community.

OUR TOUCH IN THE HEART OF DUBAI

- 01 THE PORTMAN THE
- 02 SLOANE BELGRAVIA
- 03 HEIGHTS I BELGRAVIA
- 04 BELGRAVIA SQUARE
- 05 BELGRAVIA II
- 06 HARRINGTON HOUSE
- 07 BELGRAVIA III EATON
- 08 PLACE SOMERSET MEWS
- 09
- 10



YOUR HOME IN AN IDYLIC LOCATION



7 MINUTES
Dubai Hills Mall



10 MINUTES
Mall of the Emirates



10 MINUTES
Dubai Autodrome



10 MINUTES
Dubai Marina



15 MINUTES
Downtown Dubai
& Burj Khalifa



15 MINUTES
Burj Al Arab



18 MINUTES
Palm Jumeirah



20 MINUTES
Jumeirah Beach



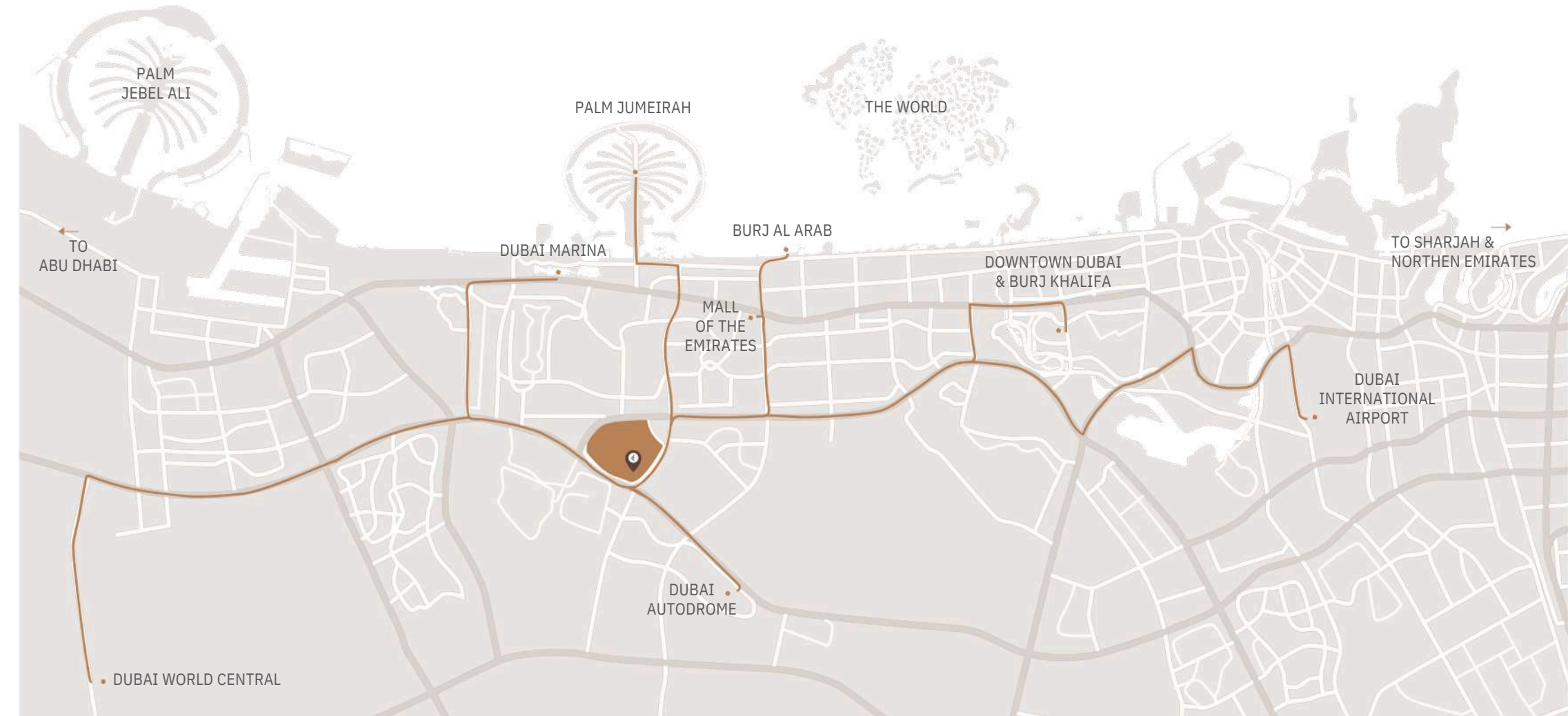
20 MINUTES
Museum of the Future



28 MINUTES
Dubai World Central



30 MINUTES
Dubai International Airport





WELCOME TO

THE PORTMAN

The Portman by Ellington Properties captures the essence of bright, modern living in well-crafted residences with seamless connection to the outdoors and an abundance of high-quality amenities that will engage the residents with an unparalleled hospitable living experience.

The vision was to create a residential building centered on the principle of balance and vibrancy. The verticality of the residences has been complimented by an expressed feature that balances the proportions and creates a depth to the façade that frames the individual living spaces and naturally shades them from the intensity of sunlight.

The Portman is Ellington's latest residential development in Jumeirah Village Circle, with 173 residential units ranging from studios, 1 and 2 bedroom apartments, adding to the excellent portfolio of Ellington Properties' projects.



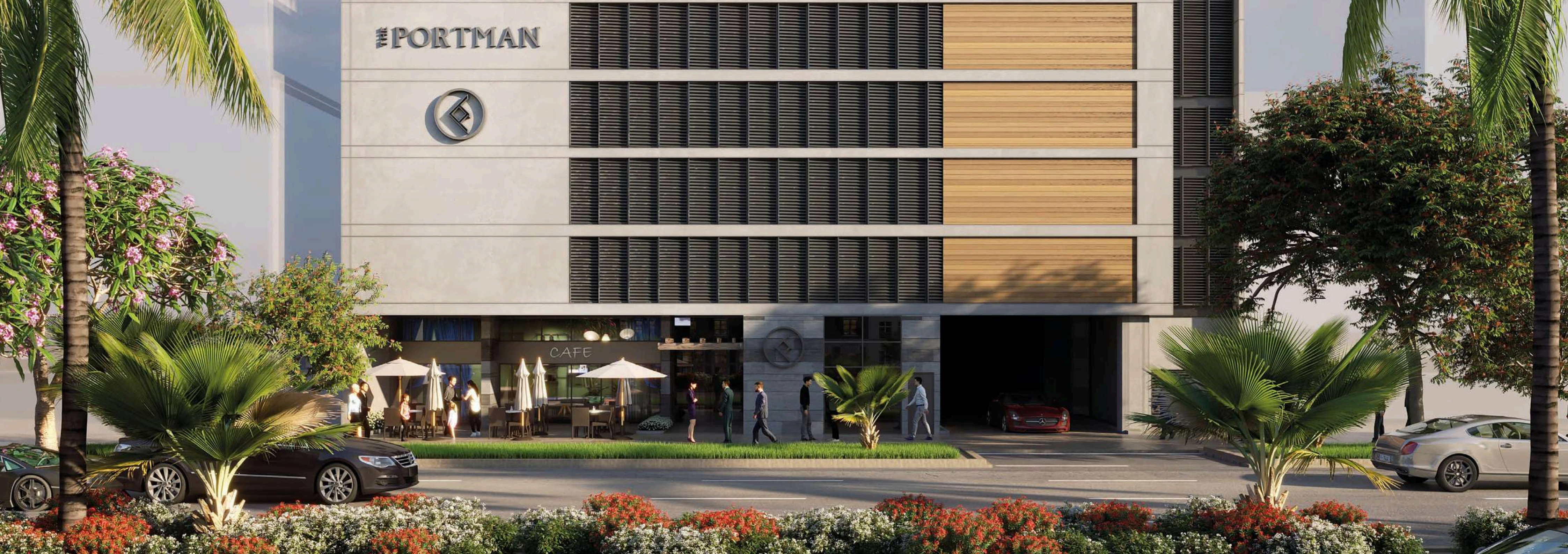
A
HARMONY OF
B A L A N C E &
V I B R A N C Y

An elegant tower with contemporary style façade and a contrasting palette of white and timber. The entrance of the building is highlighted by the rich and textural dark travertine and grand lobby windows providing a peek into the art and living experience that lies within.

THE PORTMAN



CAFE





A
WELCOMING
& REASSURING
SPACE

The lobby gives you a feeling of comfort and hospitality and it serves as a living space for both residents and visitors. It features bespoke art pieces by regional artists and provides the perfect balance between form and function.

AN IDEAL PLACE
TO READ, RELAX & SOCIALIZE





INDULGE
IN A
RESORT-STYLE
EXPERIENCE

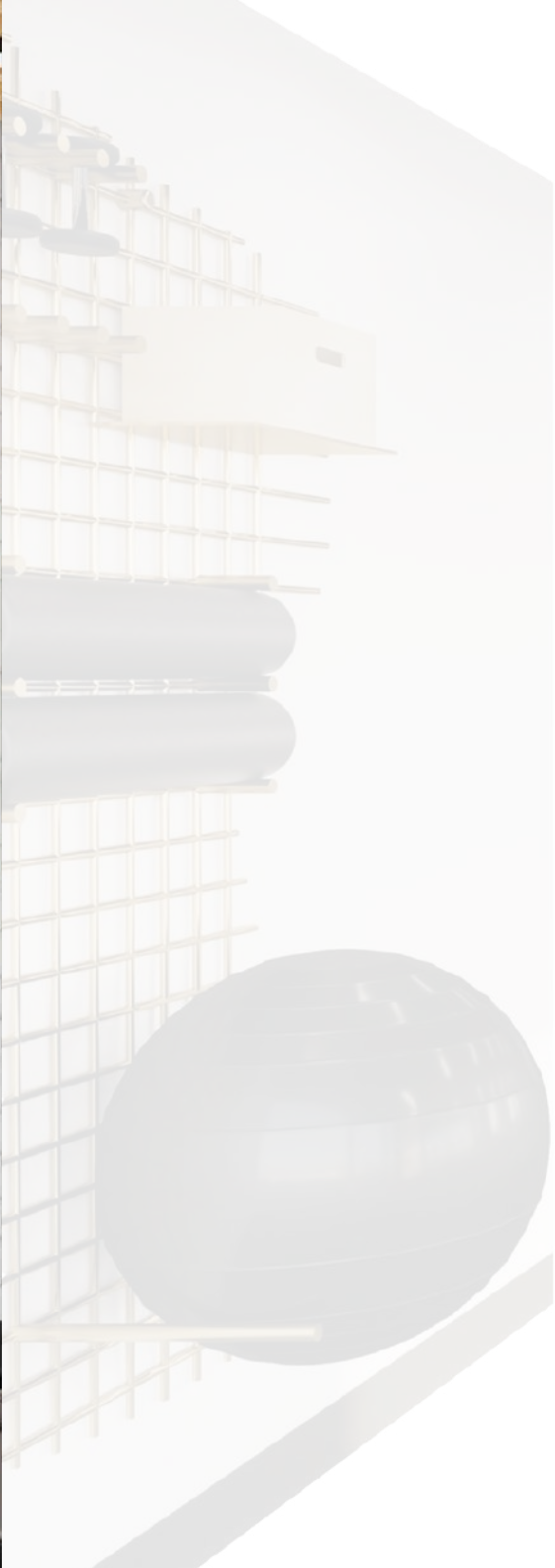
The pool deck is one of the most beautiful spaces in The Portman, it features cabanas, Baja shelf, plenty of sun-loungers, and an outdoor shower. It has also change rooms that include spa-inspired steam and sauna rooms. More than an outdoor area, the space is a place for leisure as well as relaxing and socializing while enjoying the view.



WORK.
SWEAT.
ACHIEVE.

INSPIRING & ENERGIZING

The fitness studio has all the aspects you need for a full body workout, with modern fitness equipment and unobstructed pool views for a pleasant experience. The studio opens to a full-height volumetric space providing ample natural daylight making it an ideal place for individual fitness or training sessions. A leap towards a healthy and balanced lifestyle.



WHERE
IMAGINATION
STARTS

The children's playroom is a child-centered and an eco-friendly place. An idyllic playroom that lays the foundation for a happy, healthy childhood with its reading, coloring, and craft areas. A dedicated children's bathroom with baby change complements the space. Designed to nurture lifetime memories, it is a healthy space for kids of all ages to enjoy and learn.





DESIGNED TO NURTURE
LIFETIME MEMORIES







ACTIVITY AREA

The Activity Area at The Portman is a peaceful outdoor area with a mix of social, wellbeing and entertainment spaces. It features a shaded kitchen, a lounge area and multiple dining tables for BBQ. Residents will also enjoy a shaded seating area and an outdoor kids' play area with equipment that are sustainably produced.

MODERN CONVENIENCE
ALL WITHIN YOUR
REACH

The Portman provides its residents a large number of bicycle parking and a wash area carefully designed and conveniently located. Along with recycling stations, and an EV charging bay.





A B R I G H T A N D N E U T R A L P A L E T T E

The Portman is a modern perspective on vibrant urban living with peaceful and bright vibes. The light palette, with its beach connotations, provides a neutral and reassuring environment to the residents' active lives.

The color scheme is a mix of bright white, neutral coffee tones, and warm wood accented with delicate touches of black, textural compositions, and art.





THOROUGH DETAILS
FOR A MEMORABLE
CULINARY EXPERIENCE

The kitchen is built on meticulous details, great finishing, and a strong understanding of form and function, with built-in appliances and a modern breakfast counter that can also be used as a workstation. The kitchen is a practical place that greets you into a world of originality and creativity.

ELLINGTON
PROPERTIES



W E L C O M I N G & C O M F O R T I N G

Amazing décor, elevated ceilings, and connection to the outdoors, the living room is an open area where living, dining, and kitchen are combined into a practical lifestyle. The Portman living area offers a warm and inviting setting for interactions and gathering with friends and family.





COZY & RESTFUL

Elegant, tranquil, sophisticated, and inviting are the words that describe the bedrooms in The Portman. The bedrooms are created to be a gateway where you unwind and recharge after a long day providing each individual with a sense of warmth and well-being.

With wood look flooring, heightened ceilings, big sunlight windows and plenty of storage spaces to Ellington style wardrobes, the spacious bedrooms make you at ease in a natural-inspired setting.





A
BRIGHT &
SOFT AMBIENCE



RELAXING & REFRESHING PLACE

With plenty of cabinet and display space, as well as high-quality fixtures and accessories, the bathroom is both chic and practical. The bright white wall tiling, as well as the soft, warm porcelain flooring, draw attention to the feature walls. The bathroom also include mirror cabinets and shelves offering useful storage to maintain your bathroom tidy. All of these exclusive aspects contribute to the room's spa-like ambience.

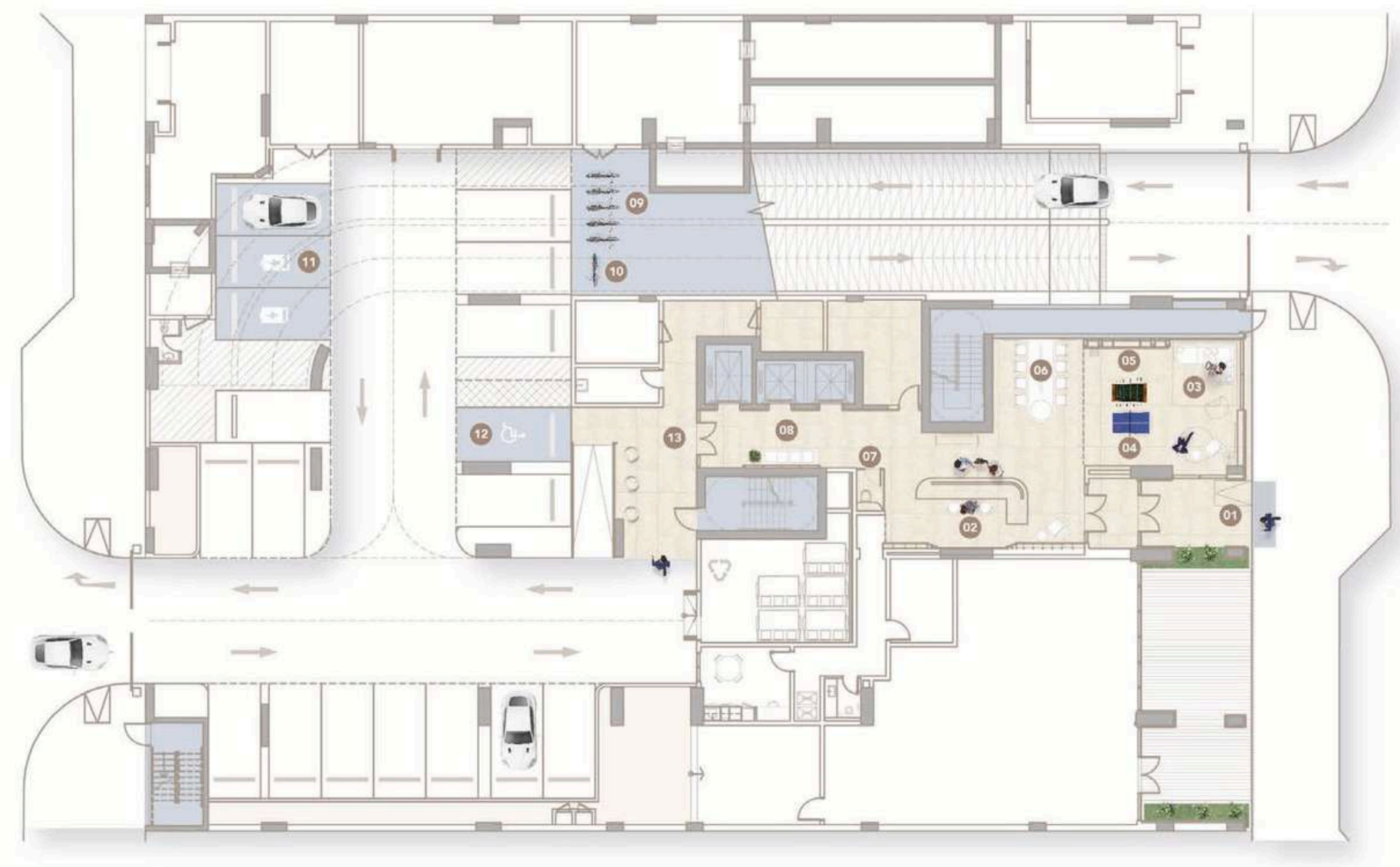


CHIC
& PRACTICAL



GROUND FLOOR AMENITIES PLAN

- | | | | |
|----|--------------------------|----|--|
| 01 | MAIN ENTRANCE | 08 | LIFT LOBBY |
| 02 | LOBBY RECEPTION | 09 | BICYCLE PARKING |
| 03 | LOBBY LOUNGE AREA | 10 | BICYCLE WASH AREA |
| 04 | LOBBY ENTERTAINMENT AREA | 11 | EV CHARGING STATIONS |
| 05 | LIBRARY WALL | 12 | PARKING FOR PEOPLE OF DETERMINATION |
| 06 | WORK & COMMUNAL TABLE | 13 | RESIDENTS' ACCESS TO PARKING & AMENITIES |
| 07 | TELEPHONE BOOTH | | |

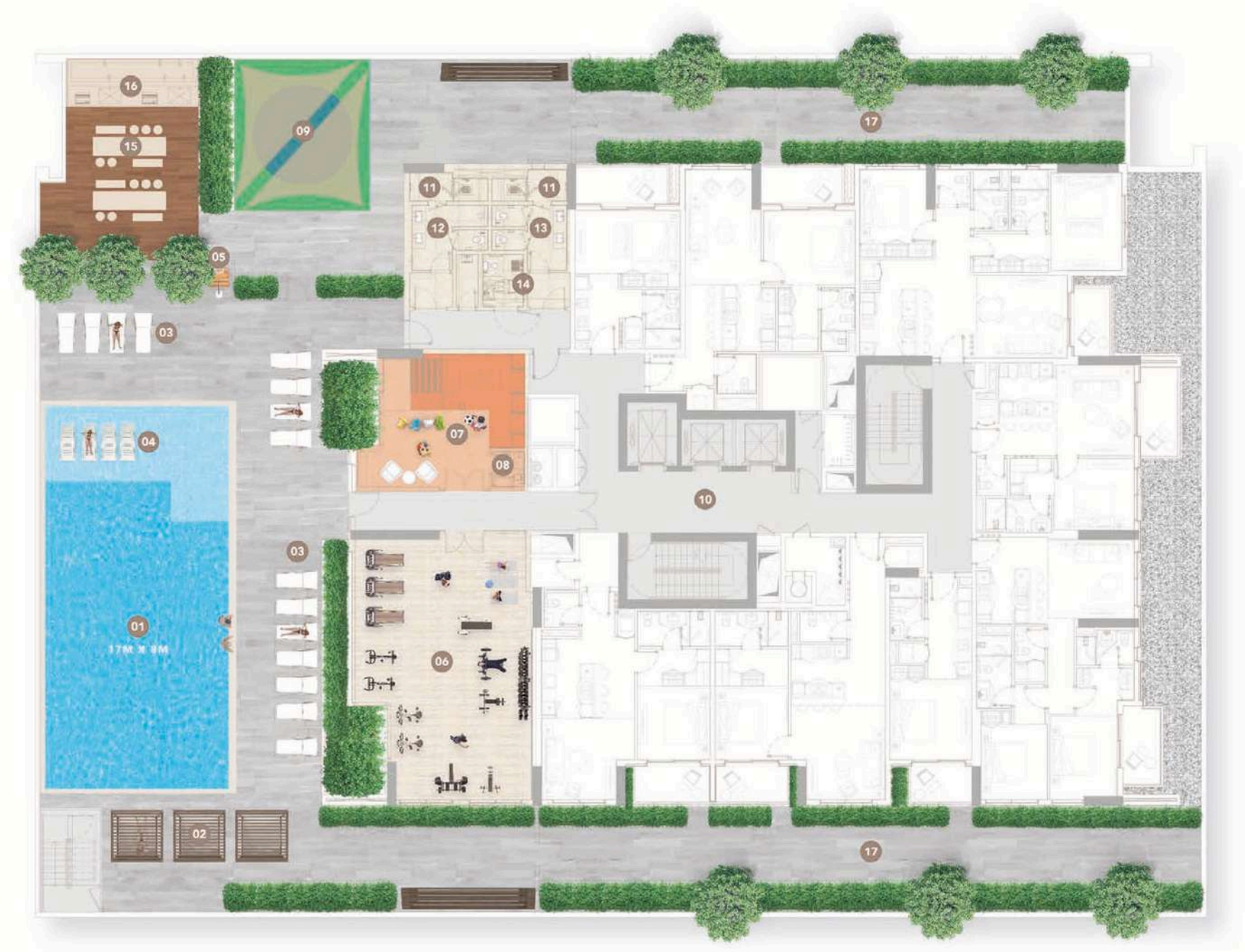


SCAN TO VIEW
THE INTERACTIVE
AMENITIES PLAN



FIRST FLOOR AMENITIES PLAN

- | | | | |
|----|------------------------|----|---|
| 01 | LEISURE & LOUNGE POOL | 10 | LIFT LOBBY |
| 02 | CABANAS | 11 | STEAM SHOWER |
| 03 | POOL SUN LOUNGERS AREA | 12 | MALE CHANGING ROOM |
| 04 | BAJA SHELF | 13 | FEMALE CHANGING ROOM |
| 05 | OUTDOOR SHOWER AREA | 14 | BATHROOM FOR FAMILY & PEOPLE OF DETERMINATION |
| 06 | FITNESS STUDIO | 15 | OUTDOOR LOUNGE & DINING AREA |
| 07 | KIDS' PLAY AREA | 16 | BARBEQUE AREA WITH KITCHEN FACILITIES |
| 08 | KIDS' BATHROOM | 17 | ACTIVITY AREA |
| 09 | OUTDOOR KIDS PLAY AREA | | |



SCAN TO VIEW
THE INTERACTIVE
AMENITIES PLAN





BELGRAVIA

ELLINGTON'S FIRST ICONIC BUILDING

Belgravia is a building enveloped by a new 'Residential Rhythm', using precisely balanced proportions and bespoke details in its design. The project includes 181 units, ranging from 1 - to 3-bedroom apartments. Home to a resort-style swimming pool, gym, elegant lobbies, and kids' indoor and outdoor playing areas, along with an expansive courtyard and elegant landscaping, Belgravia provides well-equipped amenities for all its residents.

DELIVERED IN 2017
JUMEIRAH VILLAGE CIRCLE





BELGRAVIA II

A QUALITY OF LIFE THAT'S UNSURPASSED

Belgravia II offers its residents a quality of life with a colour scheme that is intentionally neutral, with a calm but strong monochromatic and contemporary palette, accentuated by Armani Grey marble inside and out. The project includes two elegant lobbies decked with signature art pieces made by local artists and commissioned by the Ellington Art Foundation.

DELIVERED IN 2019
JUMEIRAH VILLAGE CIRCLE



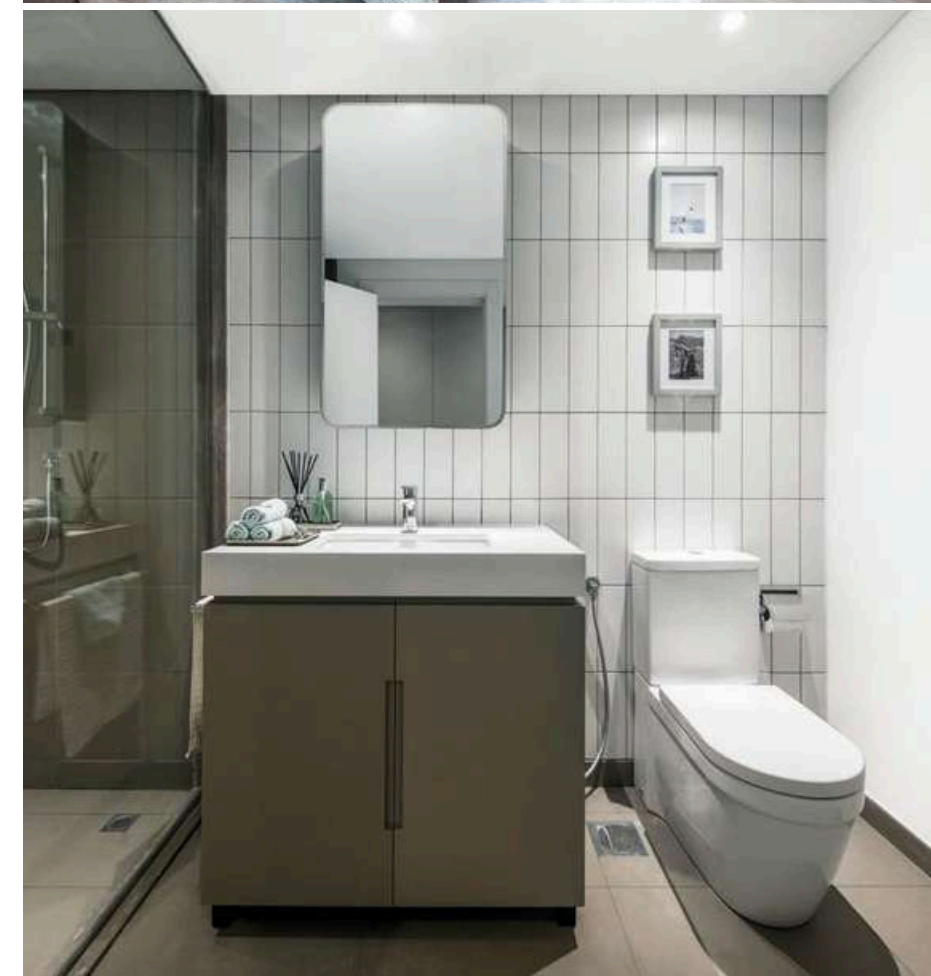


EATON PLACE

A PLACE FOR THE FAMILY

Designed to cater to the needs of families looking for a practical living option without compromising the space nor the design, Eaton Place offers a collection of 110 units including studios, 1, 2 & 3 bedroom residences. The project offers on-site opportunities for fitness and recreation, such as the well-equipped gym, the outdoor pool surrounded by lush greenery, play areas and more.

DELIVERED IN 2019
JUMEIRAH VILLAGE CIRCLE



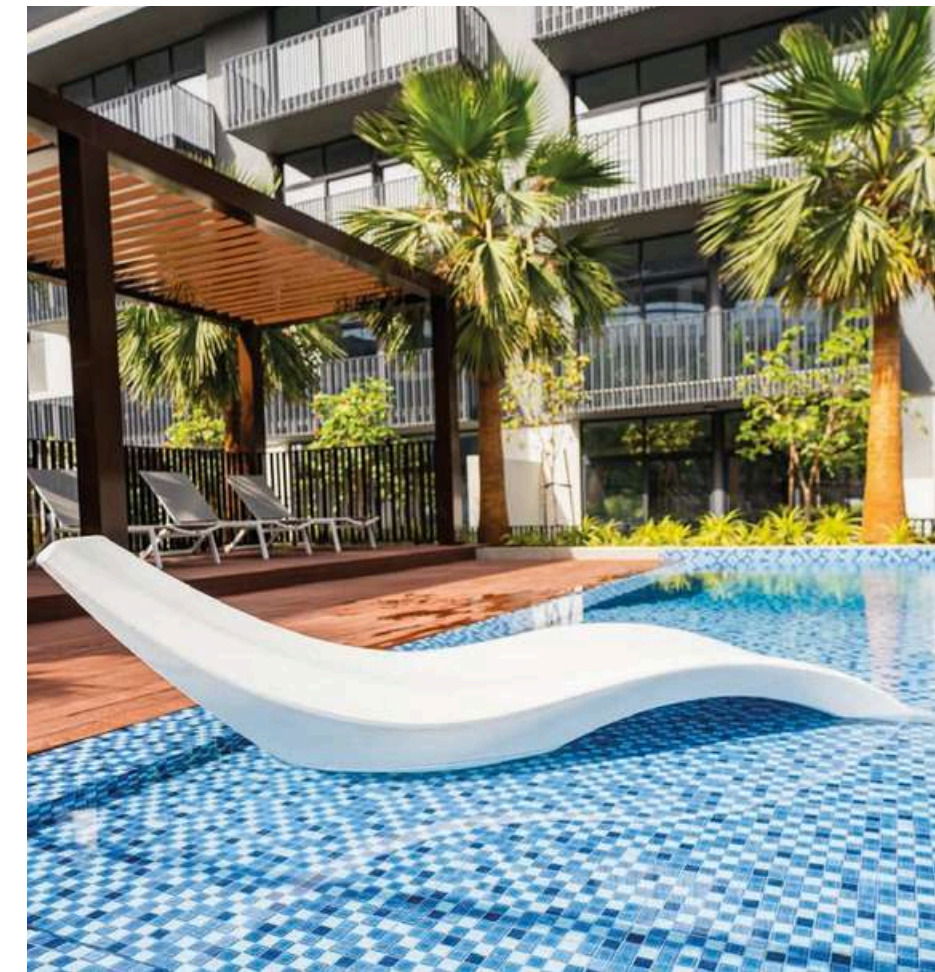


BELGRAVIA III

CRAFTED FOR LIVING

Belgravia III comes with a fresh, cool palette with penny-round tiles, white joinery and light wood accents. The project is home to our largest courtyard yet, alongside two spacious, double-heighted lobbies. As a uniquely designed community, it offers 260 modern studios, 1 and 2-bedroom apartments, and townhouses, with a host of excellent amenities.

DELIVERED IN 2021
JUMEIRAH VILLAGE CIRCLE



OUR ACCOMPLISHMENTS

ARABIAN PROPERTY AWARDS

2017

Best Residential High-Rise Architecture
–DT1
Best Architecture Single Residence
– The Ellington Collection at
The Palm Island

INTERNATIONAL PROPERTY AWARDS

2018

Innovative Company of the Year
Best Luxury Project
–DT1

ARABIAN BUSINESS AWARDS

2019

Best Interior Design Show Home
–Belgravia Heights 1
Best Bathroom Design
–DT1
Best Regional Residential Property
–Emirates Hills
Best Global Residential Property
–Emirates Hills
Best Office Interior
–Ellington Office

CUSTOMER HAPPINESS SUMMIT & AWARDS

2019

Customer Happiness Award
–Real Estate Developer of The Year

BUILD MAGAZINE

2019

Best Boutique Property
Development Company
Middle East
Award for Excellence in Design-
Led Solutions 2019

INTERNATIONAL PROPERTY AWARDS

2020

Best Residential Development
–Wilton Park Residences
Best Bathroom Design
–Wilton Park Residences
Award-winner in Development Marketing
–Live In Design Campaign
Award-winner for Residential Interior
–Apartment – Eaton Place
Award-winner for Residential Interior
–Show Home – Belgravia Square

LUX LIFE MAGAZINE AWARD 2021

2021

Best Luxury Real Estate Developer
in Dubai

INTERNATIONAL PROPERTY AWARDS

2021

Best Residential Interior - Showhome
- Wilton Park Residences
Award Winner in Residential Development
–DT1
Award Winner in Bathroom Design
–Wilton Terraces
Award Winner in Kitchen Design
–Wilton Park Residences

ELLINGTON PORTFOLIO



Set among a community of luxury and sustainability, Ellington House breathes new life into its idyllic surroundings. The building has an innate quality of blending in and standing out simultaneously, with dreamy, light-filled multifamily apartments overlooking Dubai Hills Golf Course and out across the city. From one of the Emirates' most prestigious locations, Ellington House offers a fresh perspective on living well and investing wisely.



Berkeley Place is Ellington Properties' latest design-led project that raises the bar in exceptional living. The residence features a slew of wellness and entertainment amenities that add to its exclusivity. Berkeley Place stands out for its distinct geometries as it soars against Dubai's dazzling city views. The rooftop captures the exclusivity of the residence with a slew of amenities including an infinity pool, a lavish lounge with viewing deck.



Kensington Waters serves as the perfect backdrop to lead a contented, modern, and fulfilling life. The development's design and architecture offer residents a unique space where they can experience life in full, grow, expand and thrive. Heightened ceilings, generous outdoor areas, generous storage spaces and wide windows provide room to energise, refresh and reboot, increasing productivity and encouraging self-initiative and an active lifestyle.



DT1 is a trendsetter for the new market standard, incorporating art and amenities in the heart of Dubai. The project reflects the unique and luxurious expression of residences, wrapped in an understated yet elegant facade, and offering a truly distinct setting inside out.



An icon of contemporary architecture designed for optimum community living, Belgravia Square encompasses 225 beautifully crafted studios, 1 and 2-bedroom apartments. With amenities such as two double-heighted lobbies, dramatic staircases and bespoke art installations, it's the perfect home to lead a fulfilling life.



The Sloane by Belgravia Heights is a Miami-inspired residential tower that echoes coastal vibes and a beachside lifestyle. The project encompasses an active and dramatic indoor and outdoor fitness centre, an outdoor cinema, an outdoor BBQ, kitchen and picnic areas, a lounge and lap pool, a dramatic and bright lobby, and a rooftop pet park.



The project is designed for balanced lifestyles, where the apartments and residences flow uninterrupted into outdoor spaces and parks, seamlessly extending the interiors. It features a London-inspired aesthetic and an infinity edge swimming pool overlooking the park.



Wilton Terraces creates an atmosphere where young families can connect, share and grow. The project includes a fitness centre and yoga room, a children's pool and a family pool with a full lap, indoor and outdoor children's play areas, and BBQ areas.

BELGRAVIA HEIGHTS I

With a Scandinavian design approach, a timeless grey palette and beautiful accents of white and warm beige tones, the look and feel of this development invites minimalism, simplicity and functionality, creating a more holistic living experience for our residents.



Harrington House exemplifies a comprehensive and balanced approach to urban living, inspired by the breathtaking Arabian Desert and its natural richness, via a plethora of interwoven features that cater to a happy and healthy existence. It is a development that embodies wellbeing, pleasure, and health thanks to neutral tones and a warm color palette.

TOTALLY HOME

REAL ESTATE LLC



97145548620



971564951052



sales@totallyhomerealestate.com



<https://totallyhomerealestate.com>