



ARLO

DUBAI CREEK HARBOUR

EMAAR



Elegance & Tranquillity
by the Creek

|
DUBAI CREEK HARBOUR



Dubai Creek Harbour

Dubai Creek Harbour is an ultra-modern, stylish, and pedestrian-friendly neighbourhood that integrates with Dubai's sustainable urban character.

Situated along the historic Dubai Creek, Dubai Creek Harbour consists of 7.4 million sqm of residential space and 500,000 sqm of parks & open spaces with a viable mix of retail, business, recreation, and community facilities, all within walking distance.

With endless amenities, diverse recreational opportunities and a community filled with fun-loving, like-minded people, there is something for everyone.



Close to Everything,
Far From Ordinary

10 mins
Downtown Dubai

10 mins
Dubai Int'l Airport

40 mins
Al Maktoum Int'l Airport

Redefining Life in the City

ARLO is nestled in a special district near Creek Beach, ideal for those looking for an active way of life. Explore the scenic waterfront promenade, enjoy play areas and an adventure playground, and go on thrilling adventures at the cycling track and skate park. Sports courts await your competitive spirit, and connections to the RTA ferry terminal and metro station promise seamless mobility.





Welcoming Serenity

ARLO offers a lifestyle defined by its contemporary elegance and serene location. Here, every day begins with picturesque views of Dubai Creek, and every moment is an opportunity for peace and rejuvenation. It is not just a place to live — it is a place to love.

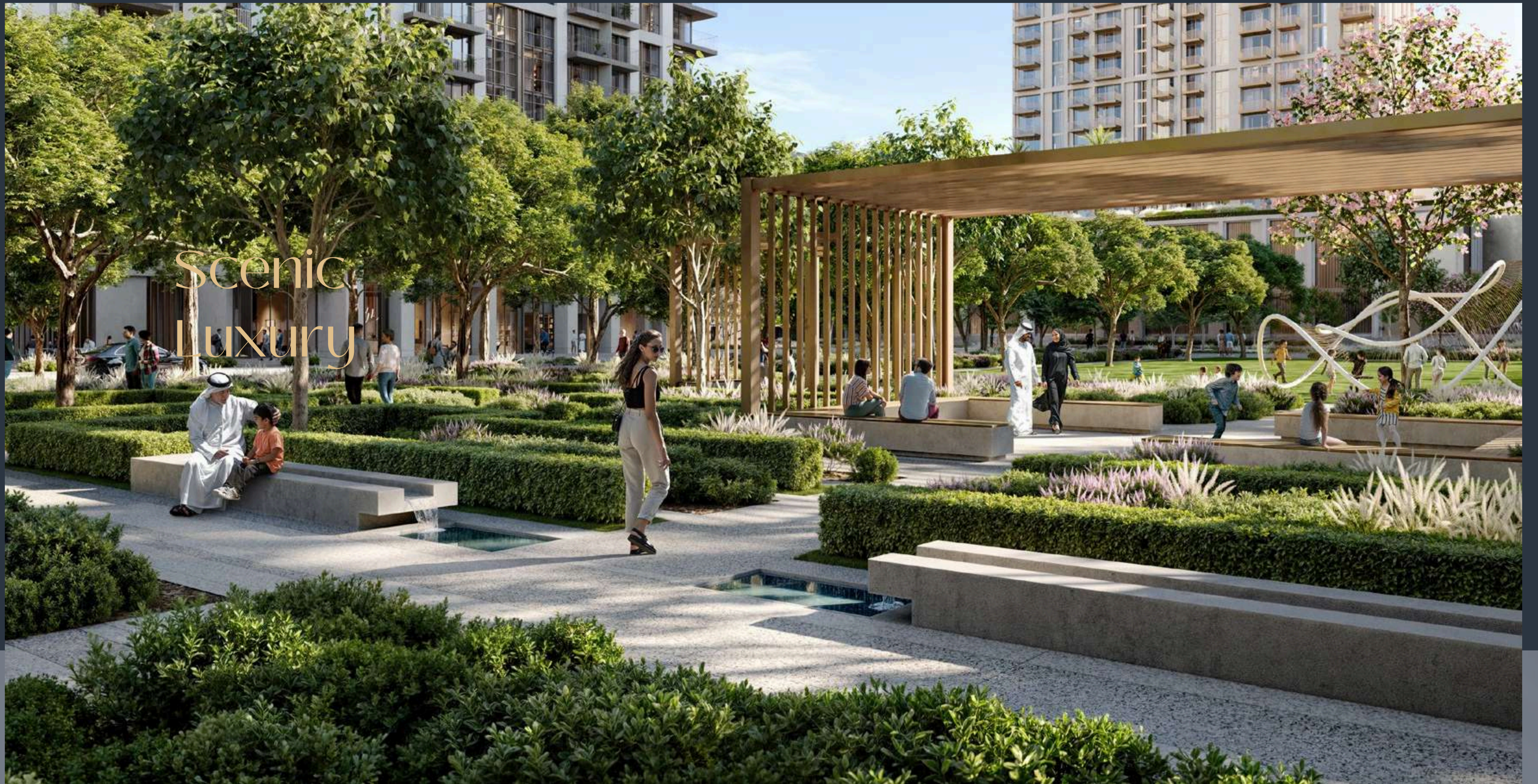
Wake Up to the
Waterfront Bliss



Enriching Experiences

ARLO is perfectly positioned to offer both the serene retreat of natural surroundings and the convenience of urban life. Its proximity to the vibrant creek promenade ensures residents enjoy immediate access to waterfront dining and shopping, enhancing everyday life with picturesque views and a lively atmosphere.

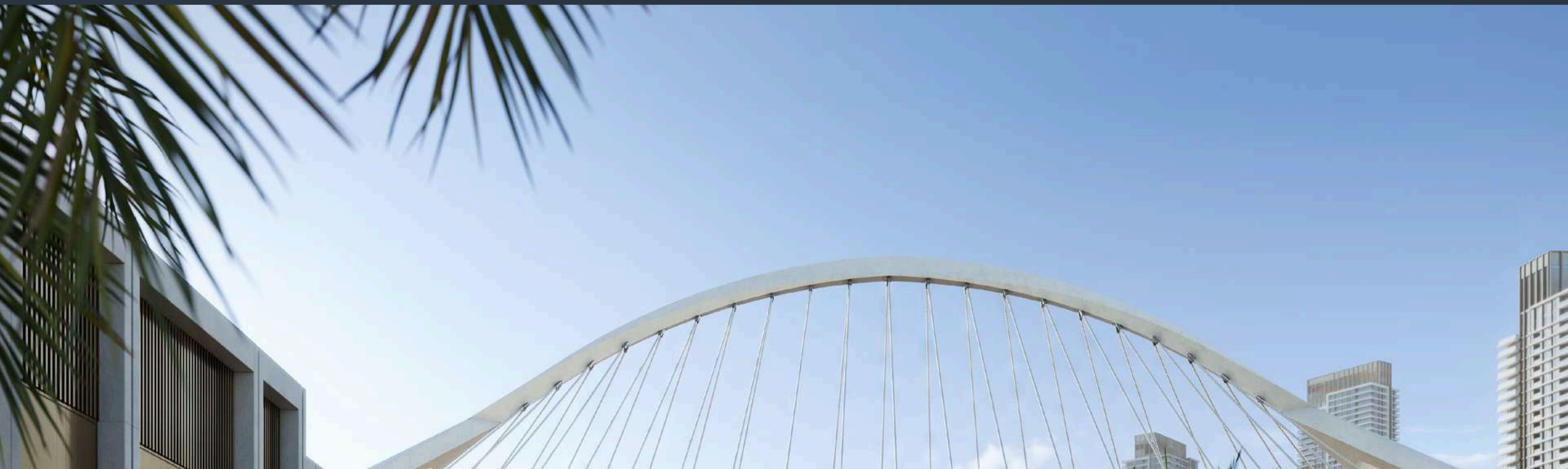




Scenic
Luxury

A Sanctuary in the City

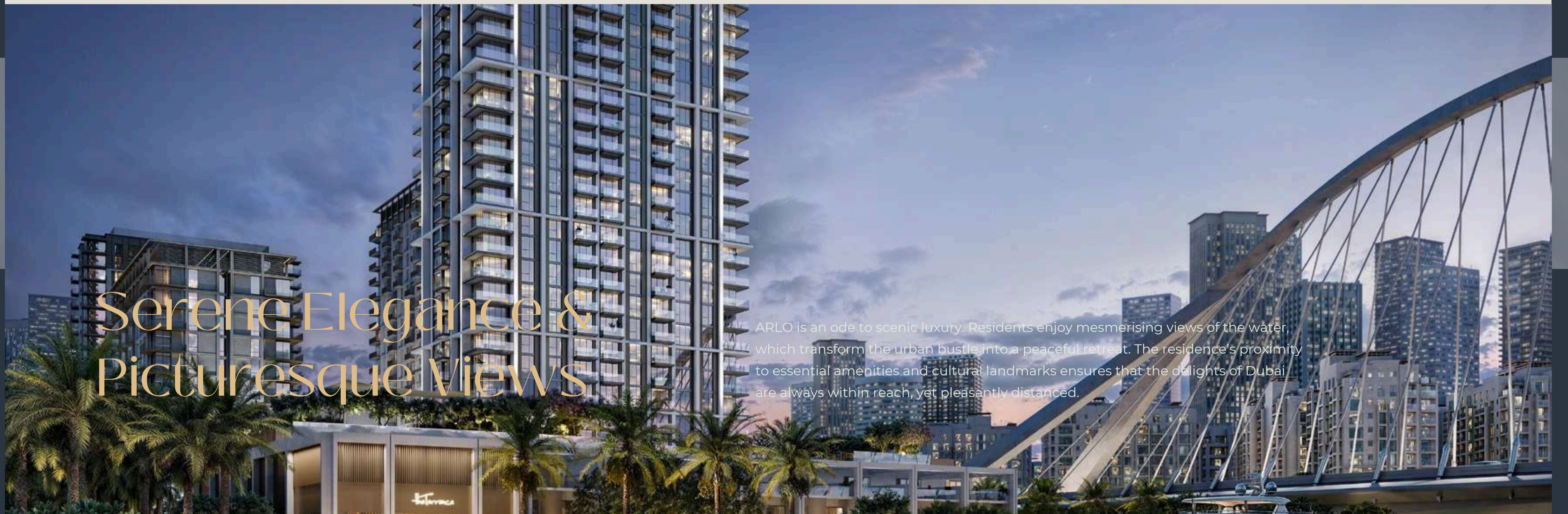
Experience the ultimate blend of urban convenience and natural serenity. An 80-meter stroll leads to a lush neighbourhood park, providing a quick escape to nature's tranquillity.



Scenic Luxury

Serene Elegance & Picturesque Views

ARLO is an ode to scenic luxury. Residents enjoy mesmerising views of the water, which transform the urban bustle into a peaceful retreat. The residence's proximity to essential amenities and cultural landmarks ensures that the delights of Dubai are always within reach, yet pleasantly distanced.



A woman with long, wavy brown hair is sitting on a plush, light-colored sofa. She is wearing a white long-sleeved top and light-colored pants. She is holding an open book and looking down at it. The background is a window with sheer white curtains, letting in soft, natural light. The overall atmosphere is calm and comfortable.

Elevate Your Life to
Opulence & Comfort

Elegance & Refined Living

ARLO's diverse array of residential options includes elegantly appointed 1, 2, and 3-bedroom apartments, along with exclusive 3-bedroom townhouses that feature expansive rooftop terraces overlooking the tranquil canal.

Large balconies extend the living spaces into the natural surroundings, offering private vistas of the parkland and serene waterways. The ground floor units also enjoy direct access to the vibrant creek promenade.







Meticulous Details

Inside ARLO, the interiors reflect an inspired vision of industrial elegance captured through minimalist aesthetics, balanced by luxurious natural materials. Each unit is fitted with sophisticated fixtures and finishes — from the kitchens to the bedrooms and bathrooms.

The high ceilings in communal areas enhance the sense of openness, creating welcoming spaces that are both functional and aesthetically pleasing.

Cultivating Wellness,
Celebrating Community

Scenic
Luxury



Catering to Body & Soul

ARLO is equipped with thoughtful amenities that cater to both the body and the soul. The residence features a yoga zone, a multipurpose room, and dedicated areas for reflection and meditation. The fitness centre and pool area are designed to integrate leisure with stunning views, ensuring every activity is imbued with an air of grace.



Swimming Pool



Multipurpose Room



Fitness Studio



Yoga Zone





Mindful Lifestyle

ARLO is committed to sustainability, incorporating features that minimize its environmental impact while maximizing comfort. Energy-efficient systems and smart waste management practices ensure that the residence not only meets but exceeds modern standards of green living.

This commitment extends to every aspect of ARLO, promoting a lifestyle that is mindful, luxurious and eco-friendly.

A scenic view of Dubai Creek Harbour at sunset. The sky is filled with soft, golden light and scattered clouds. In the foreground, a wooden walkway with a blue-tiled floor leads towards the water. On either side of the walkway, there are rows of palm trees. In the middle ground, a large, multi-masted sailing ship is docked at a pier. The water is calm, reflecting the sky and the city skyline in the distance. The skyline includes several tall buildings, with the Burj Khalifa being the most prominent. The overall atmosphere is peaceful and picturesque.

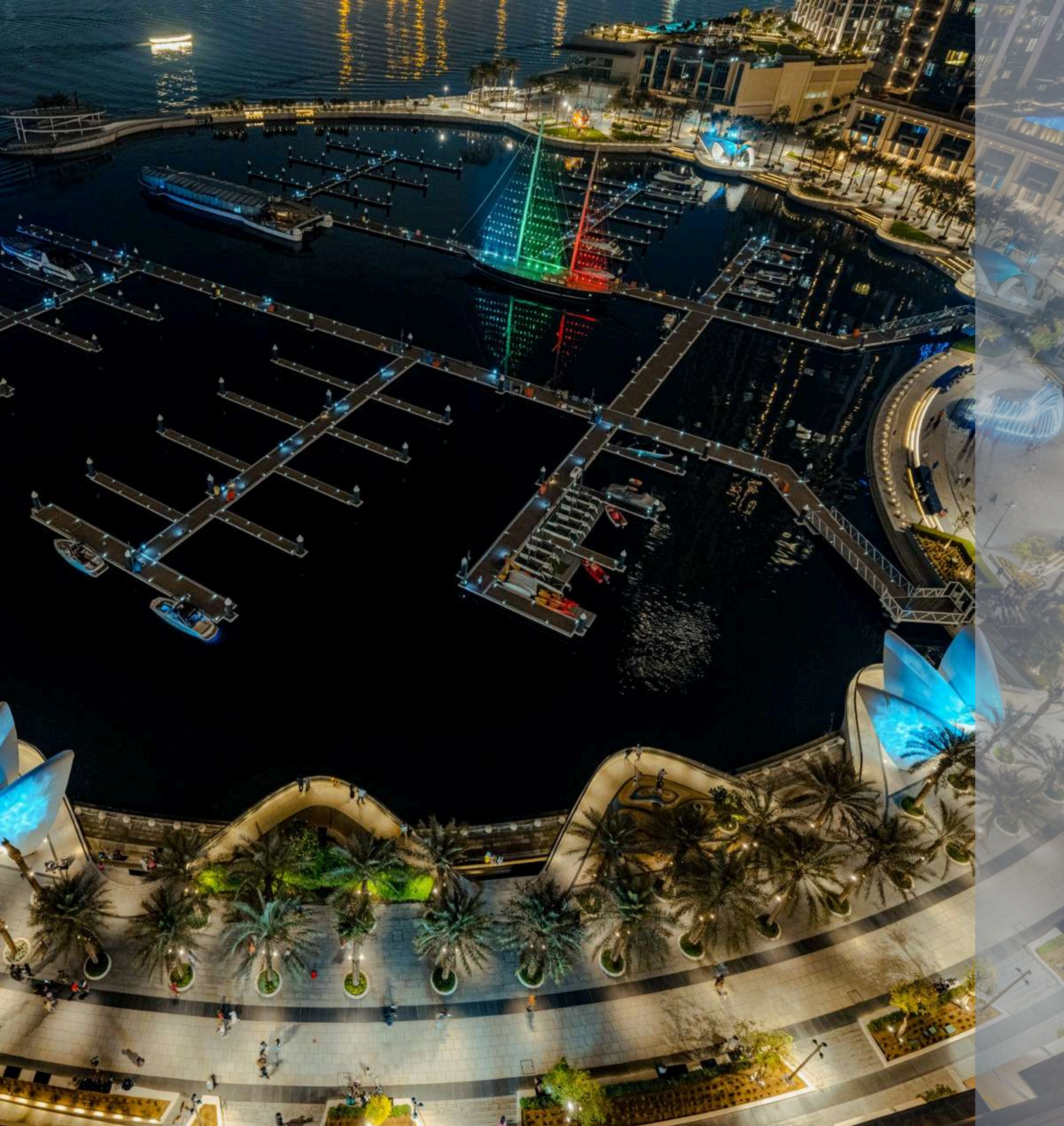
#DUBAI CREEK HARBOUR

Nearby Attractions

Harbour Promenade

Explore a bustling promenade, and an impressive skyline as you sit back and relax on the Harbour Promenade's observation deck. Set sail across Dubai Creek's glistening waters and take in the city's cityscape from a unique vantage point. Enjoy a wonderful meal while taking in the breathtaking views between shopping and boating.





Creek Marina

With a wide variety of retail, dining, and recreational options, Creek Marina never slows down. Landscaped pedestrian walkways offer stunning views of Downtown Dubai at dusk, while world-class art pieces add another layer to the trendsetting lifestyle.



Food Trucks



Art Installations



Creek Marina Yacht Club



Sculptural Viewing Deck



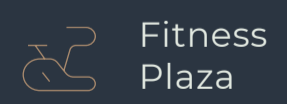
Vida Creek Harbour



Address Hotel

Central Park

The heart of island living, Dubai Creek Harbour's Central Park offers residents a tranquil refuge to unwind, first-class amenities to enjoy, and wide-open spaces to discover. With a total area of six football fields, Dubai's Central Park is one of the largest parks in the emirate and offers a variety of activities for the whole family.





Viewing Point

Spanning 70 metres over Dubai Creek, the Viewing Point's audacious cantilever grants unmatched vistas of Downtown and the majestic Address Grand towers. Seamlessly integrated into the Creek's blueprint, this architectural marvel, crafted from painted steel, stands as a bustling nexus for sightseers. Elevated, panoramic, and buzzworthy, it's Dubai's newest sunset rendezvous, open for all to revel in.

EMAAR

Global Lifestyle Developer

A leader in the global real estate market, EMAAR has grown over the years to become the largest real estate developer outside of China. You will be investing with one of the best-regarded brands in the world*.

70.09 Bn AED

Market Cap - FY 2023

26.7 Bn AED

Revenue - FY 2023

108,000

Residential Units Delivered

12+

Global Market Presence

11.6 Bn AED

Net Profit - FY 2023

25,500+

Residential Units
Under Development

*As on 31 December 2023

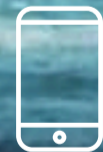


TOTALLY HOME

REAL ESTATE LLC



97145548620



971564951052



sales@totallyhomerealestate.com



<https://totallyhomerealestate.com>